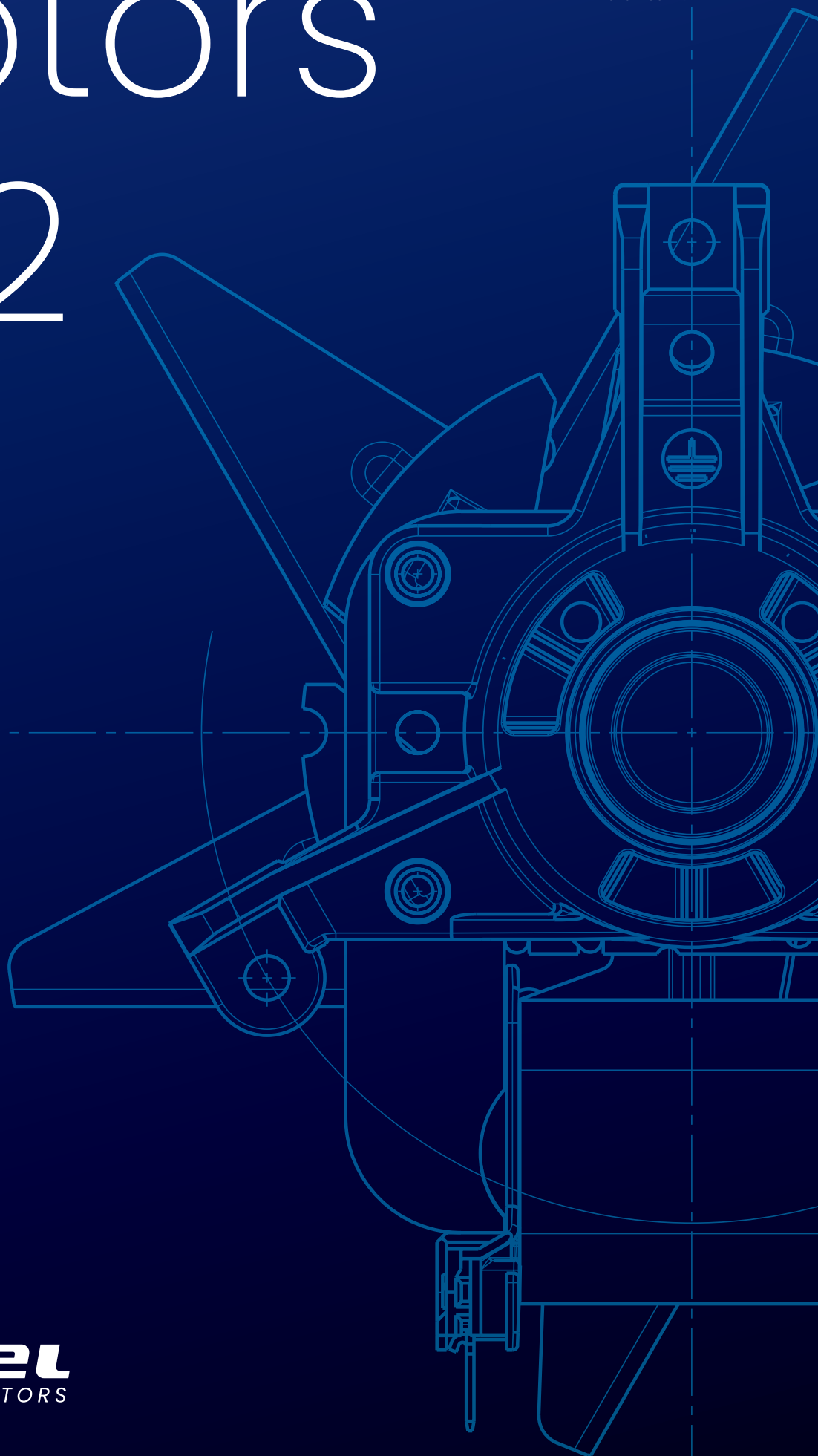


November 2024

# Motors K42



**everel**  
MOTORS

5 well-  
established  
brands

Everel, Giem, Dreefs, Molveno,  
Signal-Lux

8 product  
lines

motors, switches, electric  
selectors, encoders, signal lights,  
subassemblies, mechatronics,  
automotive switches

36 registered  
trademarks

89 patents

**Intellectual Property, Modifications, and Updates:**

All contents of this catalog are the property of the company and protected by copyright laws; reproduction or use without authorization is prohibited. The company also reserves the right to modify technical specifications and product information without prior notice.

This catalog is dated November 2024.

# Everel Group:

## Advanced Solutions in Electric Motors and Components

Since 1903, Everel Group has specialized in the design and production of electronic and electromechanical components, **serving a wide range of industries** including home appliances, automotive, HVAC, gardening and outdoor equipment, cleaning and steam solutions and healthcare. Operating primarily within the international B2B market, Everel Group has established a reputation for quality and reliability.

In recent years, our commitment to sustainability has intensified. Beyond integrating advanced technologies to enhance product performance, we have adopted a structured sustainability strategy that encompasses economic, social, and environmental impact objectives.

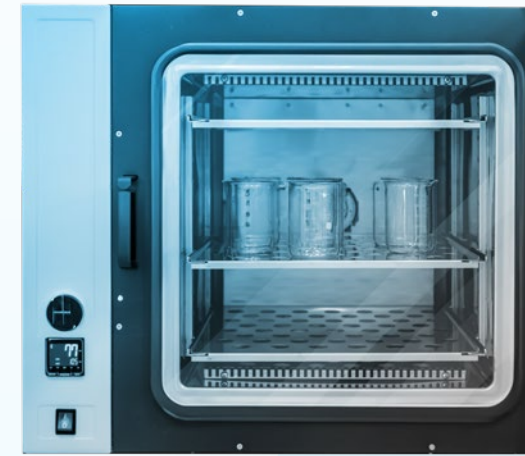
Through comprehensive impact reporting and targeted initiatives, we aim to drive meaningful change across our operations and industry.

Our latest strategic plan underscores product innovation and exploration of emerging market trends. This approach not only reinforces our leadership in the home appliance sector but also supports our expansion into industrial, professional, HVAC, and medical applications.





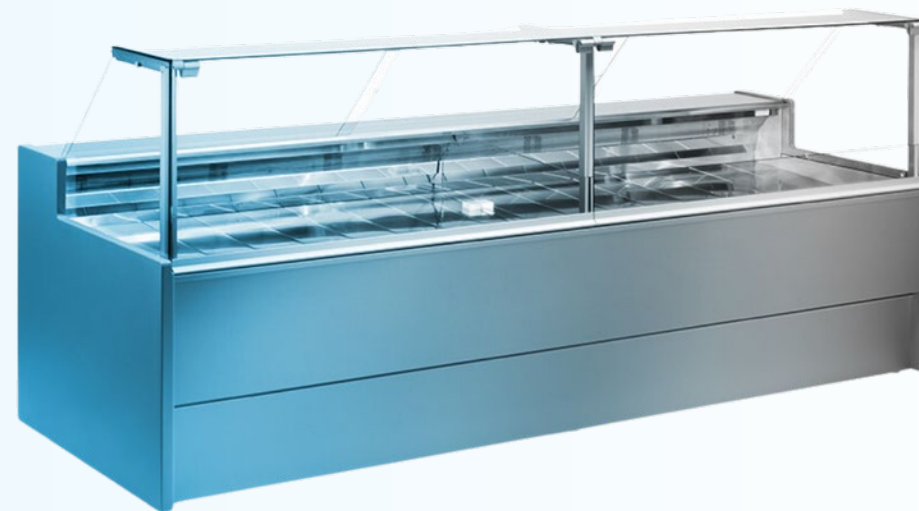
# Motors Applications



**Shaded pole motor K42  
is broadly use for:**

Professional Ovens  
Soft Cooking  
Freestanding Cookes

Food Warmers  
Professional Fridges  
Medical Devices



# Motors K42:

## Precision and Performance for Demanding Applications



Our production facility has been enhanced with state-of-the-art automated lines dedicated to the manufacture of shaded pole motors for ventilation. This investment enables us to deliver consistently high-quality products, preserving the customization capabilities that are a hallmark of Everel’s manufacturing processes.

With a dedication to innovation and a forward-looking vision, Everel Group is prepared to meet future industry demands and consolidate its position as a leader in motor technology.

The K42 motors exemplify Everel’s standards in industrial, professional, HVAC, and medical applications, ensuring high performance under even the most challenging conditions. These motors are engineered to provide:

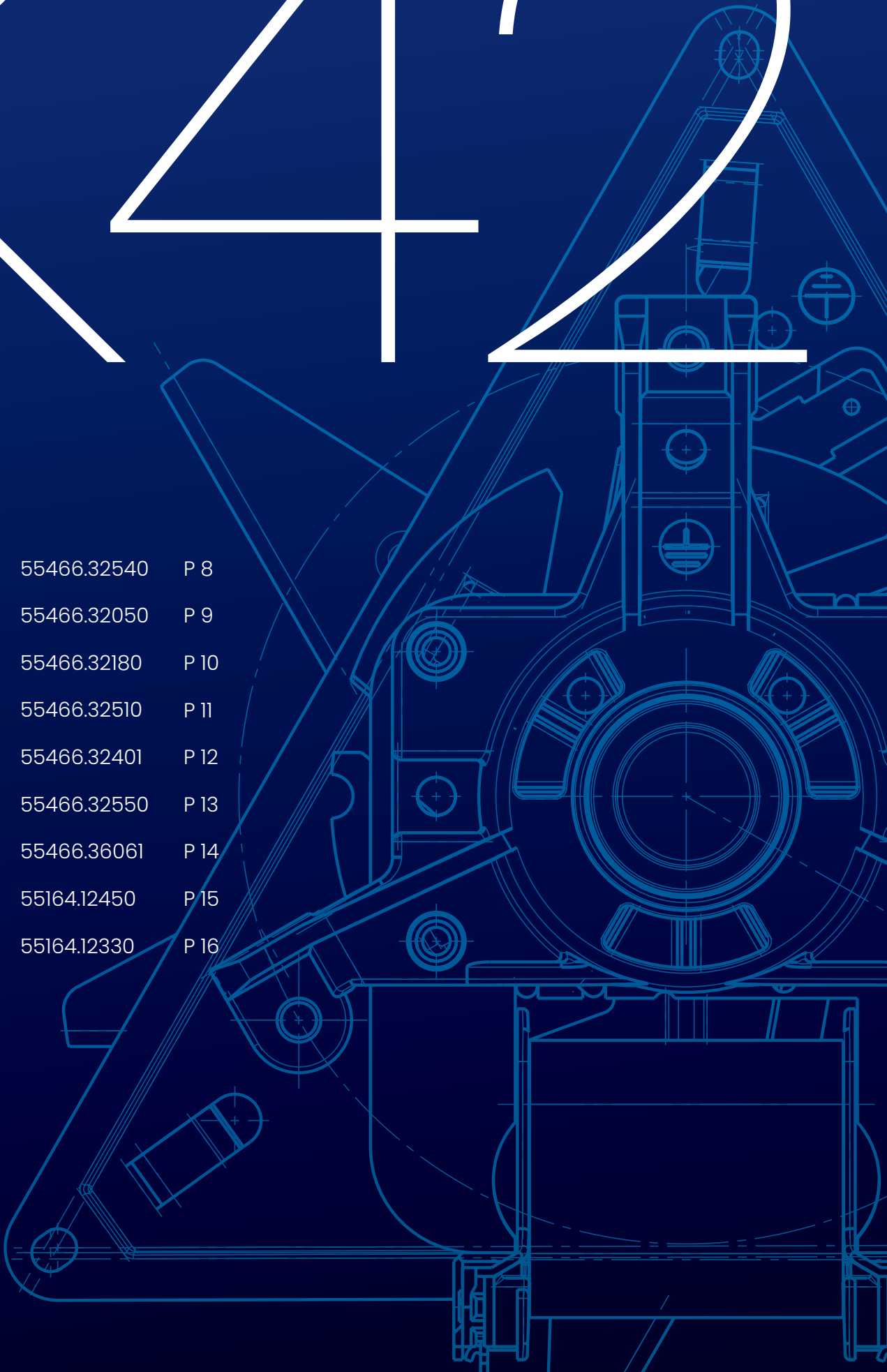
- High-temperature and harsh environment resistance
- Exceptional long-term reliability
- Low-noise operation
- Continuous duty (S1) for intensive, constant-load applications
- Compact design for installation in confined spaces



# K42

### Index

55466.32540	P 8
55466.32050	P 9
55466.32180	P 10
55466.32510	P 11
55466.32401	P 12
55466.32550	P 13
55466.36061	P 14
55164.12450	P 15
55164.12330	P 16

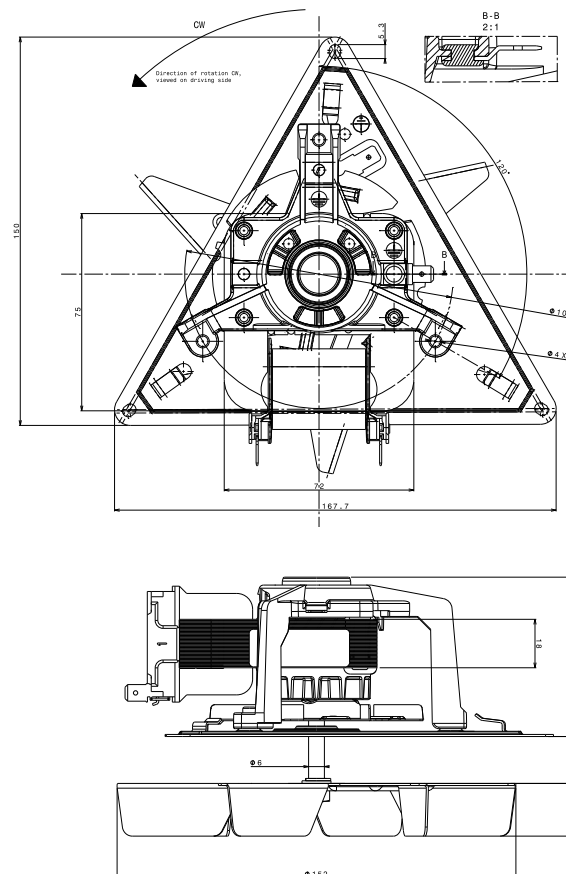


55466.32540

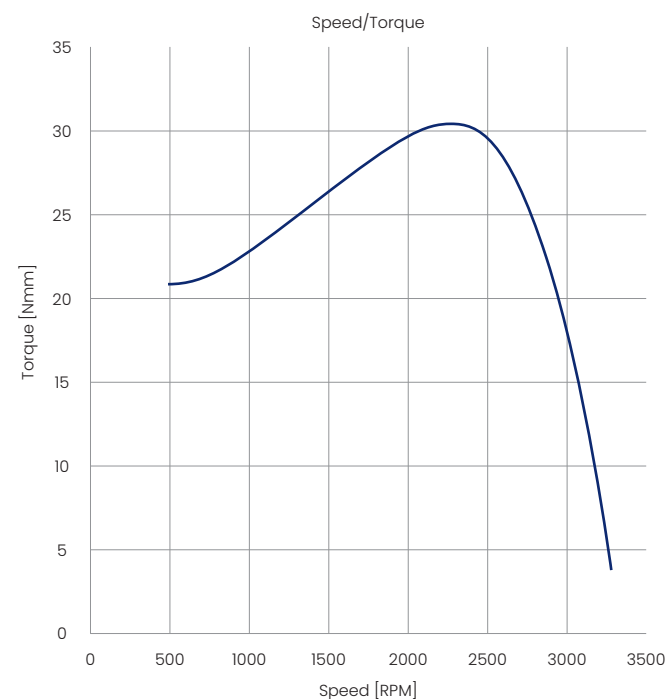
## Technical Data

Stack Height [mm]	18
Motor code	55466.32540
Voltage [V] & Frequency [Hz]	208VAC 60Hz
Input Power [W]	40
Rotation	CW
Insulation Class	H
Protection	impedence protected
Degreed of protection motor (IP)	IP00
Certification/Conformity	CE UL E322940
Bearing or bushing	ball bearing
Stator painted for anti-corrosion	yes
Shaft diamiter [Ø]	6
Shaft end	d shape machined flat
Shaft material	X46CrSi3
Fan impeller [mm]	152
Connection Type	Standard tab terminal 6,3x0,8
Shaft output (Bracket-fan seat) [mm]	19

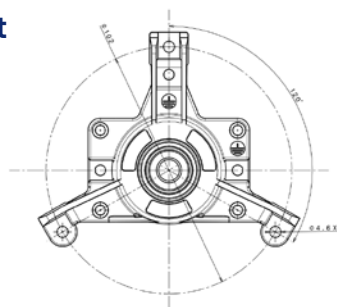
## Technical drawing



### Motor curve



## Bracket



## On Demand

Discover all the customization options  
for our products on page 18 of this catalog.

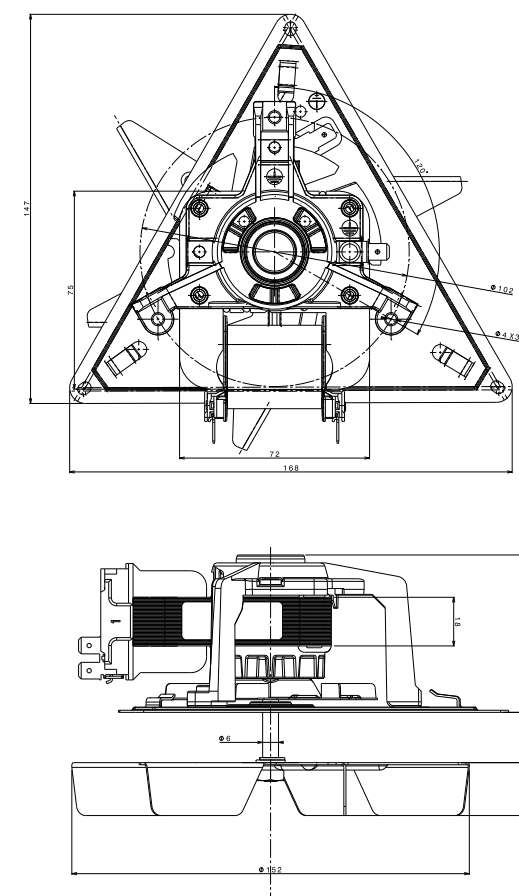
Didn't find what you were looking for?  
Contact your sales representative!

55466.32050

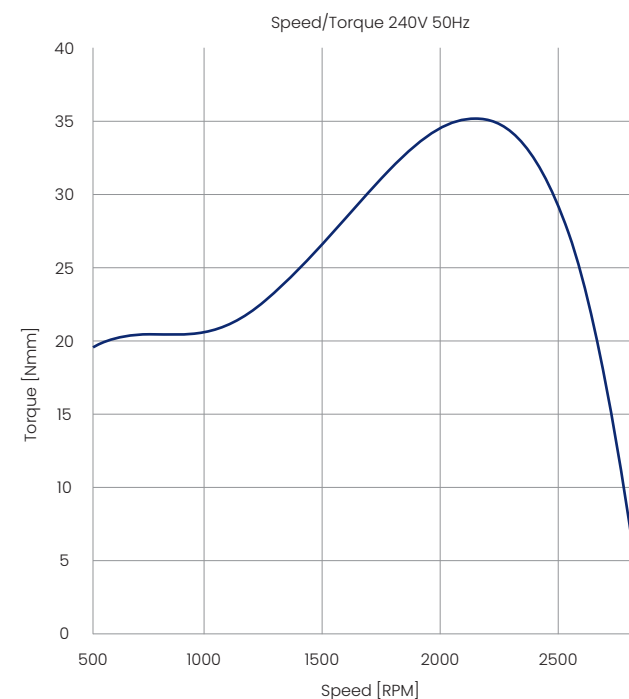
## Technical Data

Stack Height [mm]	18
Motor code	55466.32050
Voltage [V] & Frequency [Hz]	220-240VAC 50/60Hz
Input Power [W]	32
Rotation	CW
Insulation Class	H
Protection	impedence protected
Degreed of protection motor (IP)	IP00
Certification/Conformity	CE UL EAC AKCA
Bearing or bushing	ball bearing
Stator painted for anti-corrosion	yes
Shaft diamiter [Ø]	6
Shaft end	external thread machined flat
Shaft material	X46CrSi3
Fan impeller [mm]	152
Connection Type	Standard tab terminal 6,3x0,8
Shaft output (Bracket-fan seat) [mm]	Without

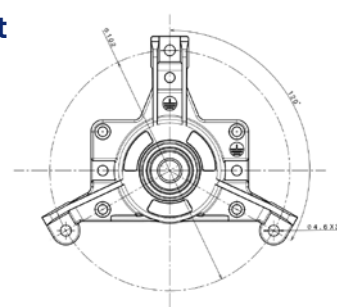
## Technical drawing



### Motor curve



## Bracket



## On Demand

<b>Voltage [V] &amp; Frequency [Hz]</b>	115VAC 50/60Hz	230VAC 50Hz
<b>Protection</b>	Without	Without
<b>Shaft end</b>	machine flat	external thread
<b>Shaft material</b>	Steel	Without

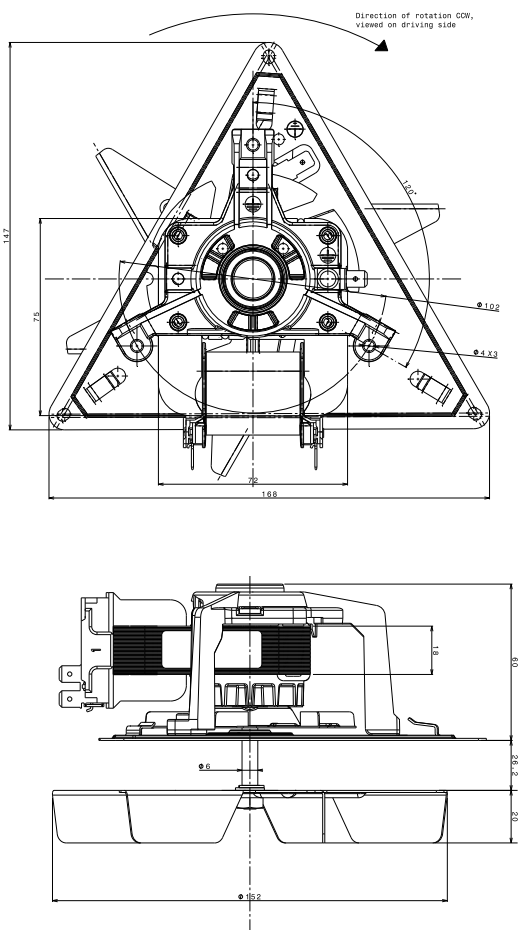


# 55466.32180

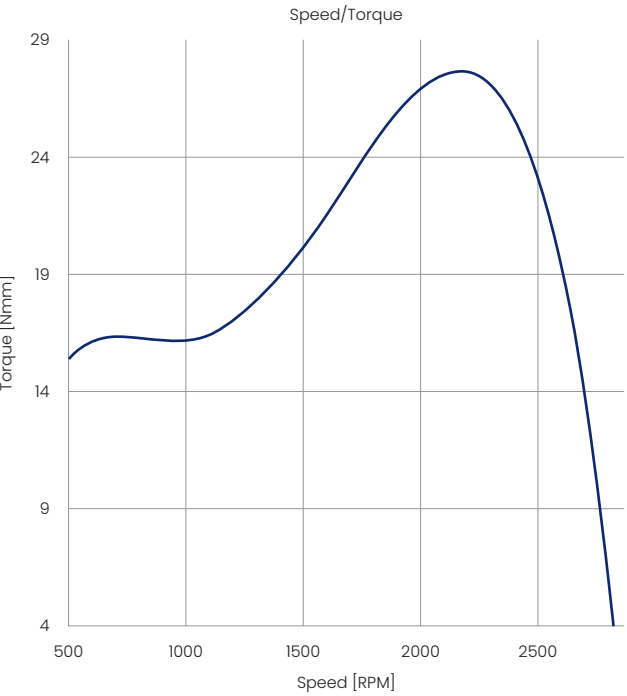
## Technical Data

Stack Height [mm]	18
Motor code	55466.32180
Voltage [V] & Frequency [Hz]	240VAC 50Hz
Input Power [W]	29,6
Rotation	CCW
Insulation Class	H
Protection	impedence protected
Degreed of protection motor (IP)	IP00
Certification/Conformity	CE
Bearing or bushing	ball bearing
Stator painted for anti-corrosion	yes
Shaft diamiter [Ø]	6
Shaft end	external thread machined flat
Shaft material	X46CrS13
Fan impeller [mm]	152
Connection Type	Standard tab terminal 6,3x0,8
Shaft output (Bracket-fan seat) [mm]	26

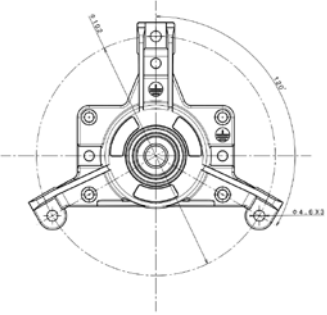
## Technical drawing



## Motor curve



## Bracket



## On Demand

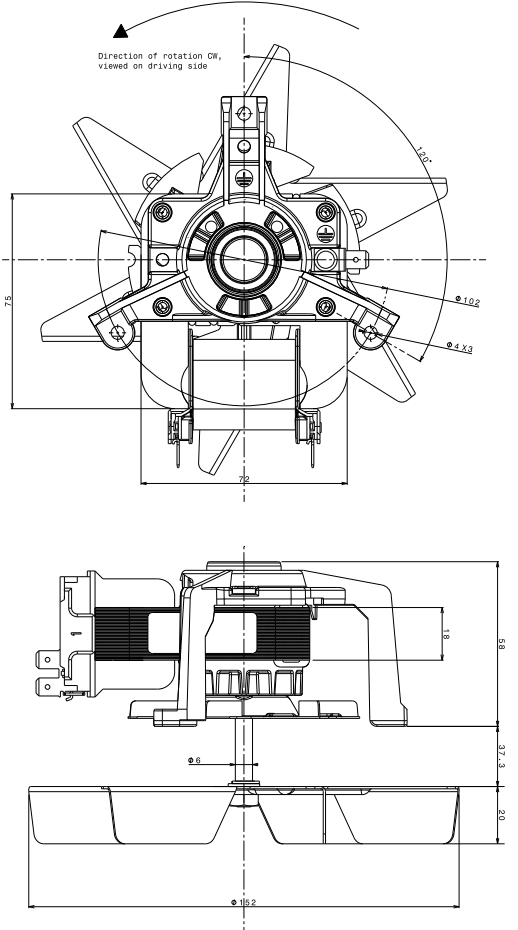
Voltage [V] & Frequency [Hz]	240VAC 50Hz
Input Power [W]	31,3
Insulation Class	F
Certification/Conformity	CE,CCC, UKCA
Stator painted for anti-corrosion	NO
Shaft end	external thread
Shaft material	Steel

# 55466.32510

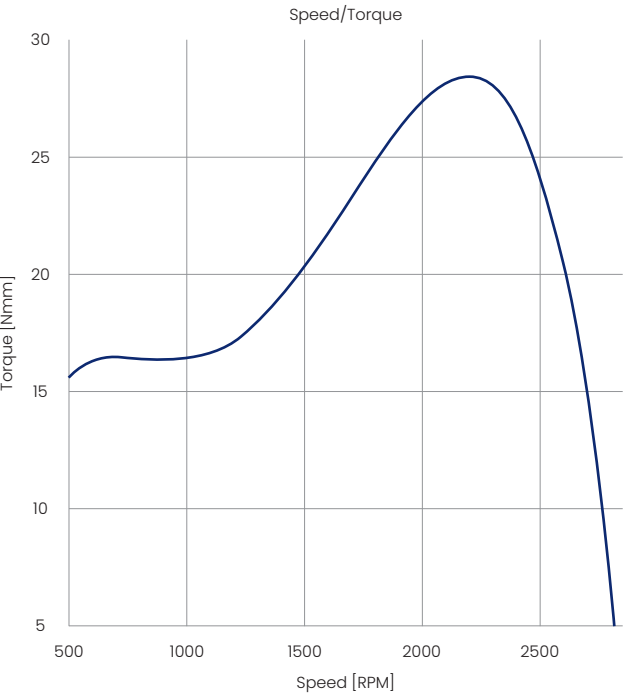
## Technical Data

Stack Height [mm]	18
Motor code	55466.32510
Voltage [V] & Frequency [Hz]	220VAC 50/60Hz
Input Power [W]	22,4
Rotation	CW
Insulation Class	H
Protection	impedence protected
Degreed of protection motor (IP)	IP00
Certification/Conformity	CE
Bearing or bushing	ball bearing
Stator painted for anti-corrosion	yes
Shaft diamiter [Ø]	6
Shaft end	d shape machined flat
Shaft material	X46CrS13
Fan impeller [mm]	152
Connection Type	Standard tab terminal 6,3x0,8
Shaft output (Bracket-fan seat) [mm]	37,3

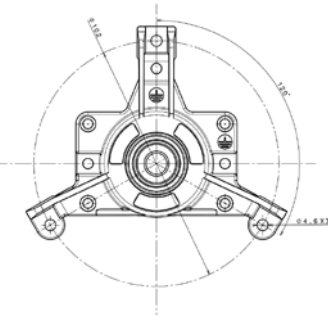
## Technical drawing



## Motor curve



## Bracket



## On Demand

Discover all the customization options for our products on page 18 of this catalog.

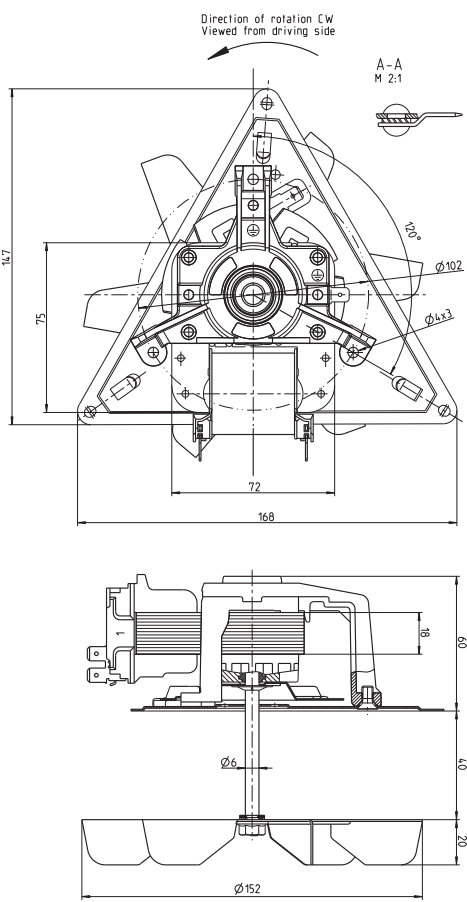
Didn't find what you were looking for?  
Contact your sales representative!

# 55466.32401

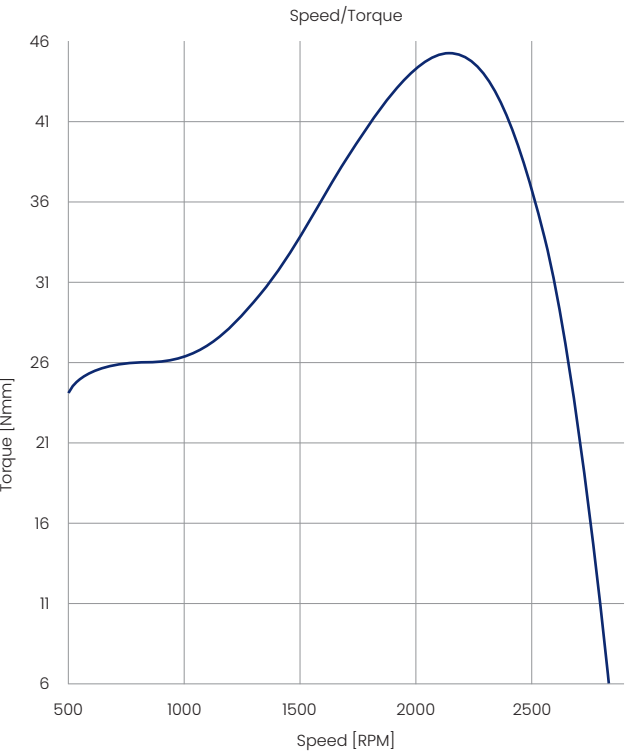
## Technical Data

Stack Height [mm]	18
Motor code	55466.32401
Voltage [V] & Frequency [Hz]	230VAC 50Hz
Input Power [W]	44
Rotation	CW
Insulation Class	H
Protection	Thermal protector 170°C with connectors
Degreed of protection motor (IP)	IP00
Certification/Conformity	Without
Bearing or bushing	ball bearing
Stator painted for anti-corrosion	yes
Shaft diamiter [Ø]	6
Shaft end	d shape machined flat
Shaft material	X46CrS13
Fan impeller [mm]	152
Connection Type	Standard tab terminal 6,3x0,8
Shaft output (Bracket-fan seat) [mm]	40

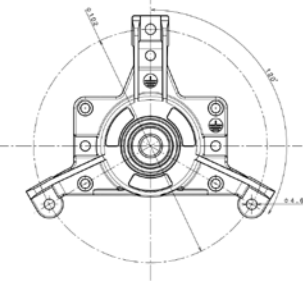
## Technical drawing



## Motor curve



## Bracket



## On Demand

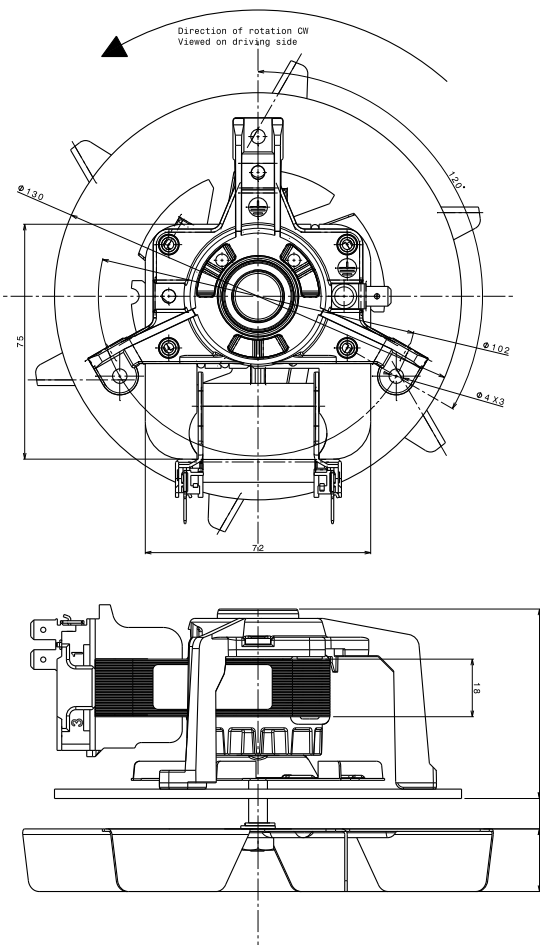
Voltage [V] & Frequency [Hz]	115VAC 60Hz	115VAC 60Hz
Input Power [W]	22/25	31/49,5
Protection	impedence protected	Without
Certification/Conformity	CE, UKCA, UL	Without
Shaft end	external thread machined flat	external thread recess for circlip
Shaft material	Steel	Without
Fan impeller [mm]	154	Without

# 55466.32550

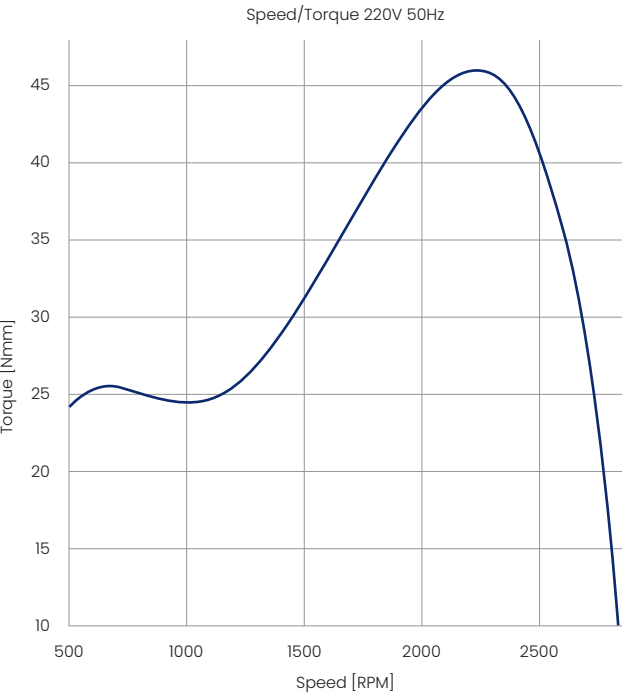
## Technical Data

Stack Height [mm]	18
Motor code	55466.32550
Voltage [V] & Frequency [Hz]	220VAC 50/60Hz
Input Power [W]	21,9
Rotation	CW
Insulation Class	H
Protection	impedence protected
Degreed of protection motor (IP)	IP00
Certification/Conformity	CE
Bearing or bushing	ball bearing
Stator painted for anti-corrosion	yes
Shaft diamiter [Ø]	6
Shaft end	d shape machined flat
Shaft material	X46CrS13
Fan impeller [mm]	152
Connection Type	Standard tab terminal 6,3x0,8
Shaft output (Bracket-fan seat) [mm]	10

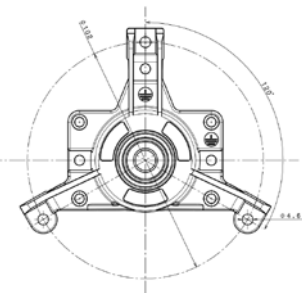
## Technical drawing



## Motor curve



## Bracket



## On Demand

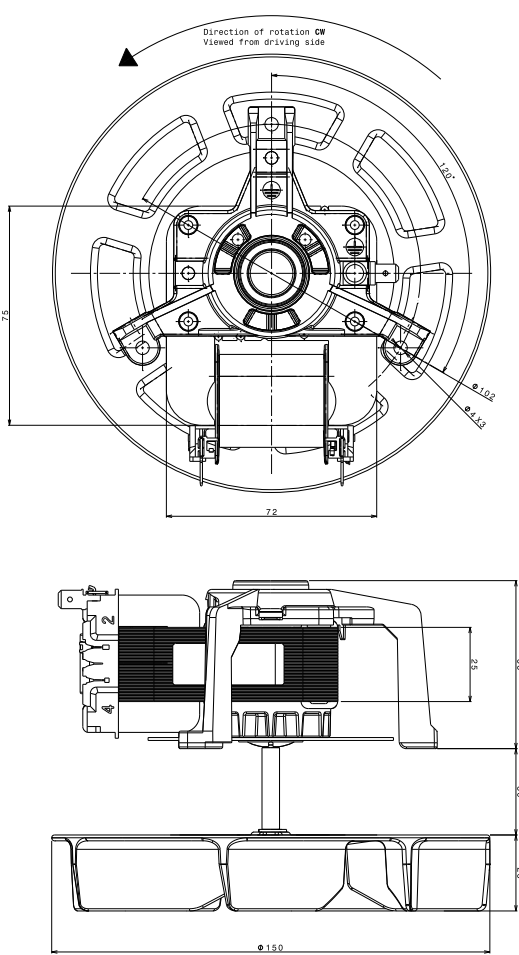
Protection	Without
Shaft end	external thread machined flat

# 55466.36061

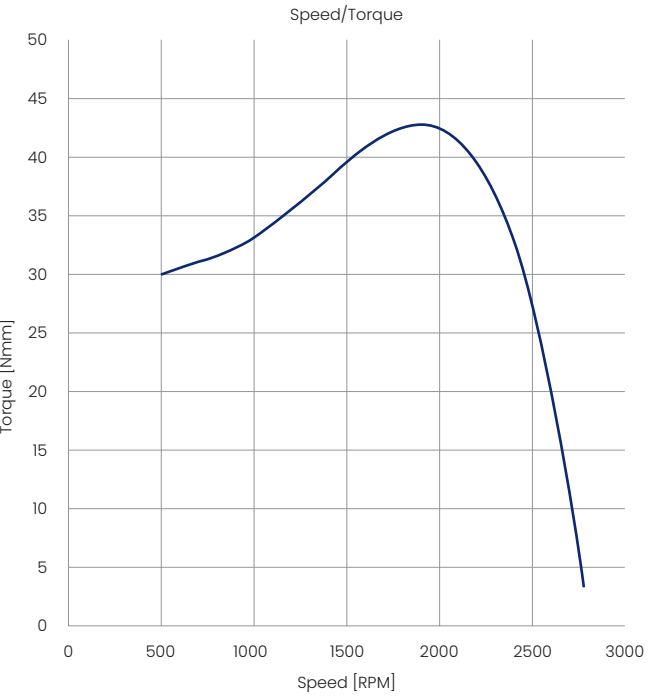
## Technical Data

Stack Height [mm]	25
Motor code	55466.36061
Voltage [V] & Frequency [Hz]	240VAC 50/60Hz
Input Power [W]	42,6
Rotation	CW
Insulation Class	H
Protection	thermal protection V 180
Degreed of protection motor (IP)	IP00
Certification/Conformity	CE UL E322940
Bearing or bushing	ball bearing
Stator painted for anti-corrosion	yes
Shaft diamiter [Ø]	6
Shaft end	d shape machined steel
Shaft material	X46CrS13
Fan impeller [mm]	150
Connection Type	Standard tab terminal 6,3x0,8
Shaft output (Bracket-fan seat) [mm]	30

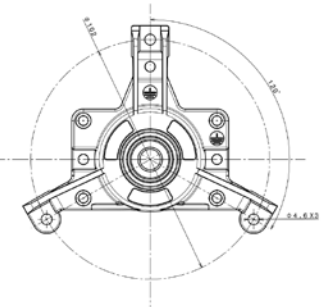
## Technical drawing



## Motor curve



## Bracket



## On Demand

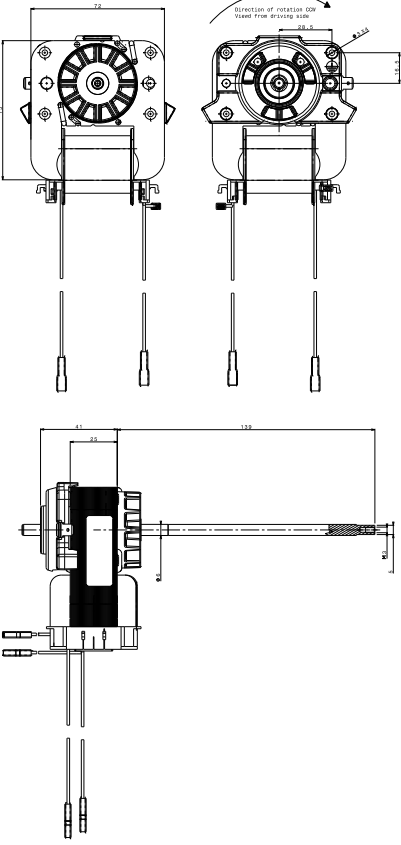
Voltage [V] & Frequency [Hz]	115VAC 50/60Hz	120VAC 50/60Hz
Input Power [W]	55	50
Protection	Without	Without
Shaft end	external thread machined flat	machined flat
Shaft material	X5CrNi18-10	Without
Fan impeller [mm]	Without	152

# 55164.12450

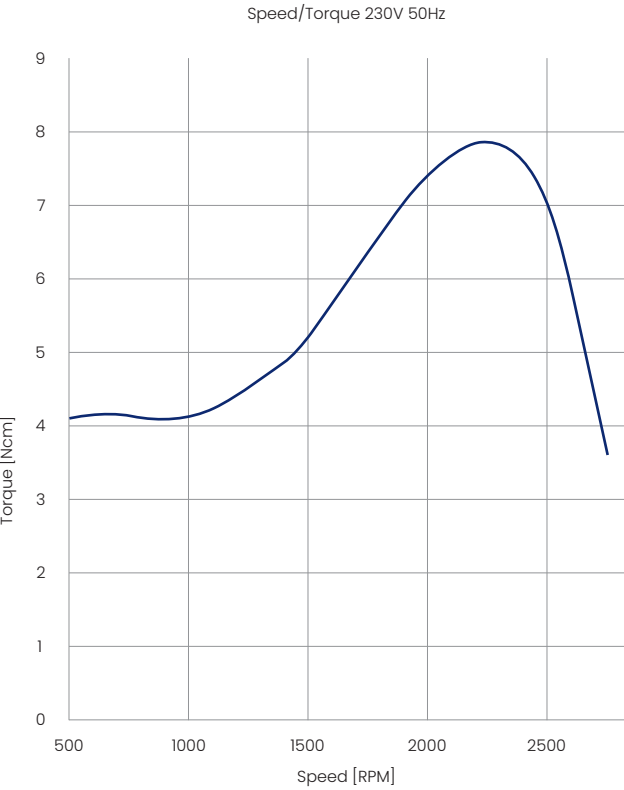
## Technical Data

Stack Height [mm]	25
Motor code	55164.12450
Voltage [V] & Frequency [Hz]	220VAC 50/60Hz
Input Power [W]	42,2
Rotation	CCW
Insulation Class	H
Protection	Without
Degreed of protection motor (IP)	IP00
Certification/Conformity	CE
Bearing or bushing	ball bearing
Stator painted for anti-corrosion	yes
Shaft diamiter [Ø]	6
Shaft end	internal thread stepped
Shaft material	ROUND 6.2 X5CrNi 1.4301
Fan impeller [mm]	Without
Connection Type	Cables
Shaft output (Bracket-fan seat) [mm]	126

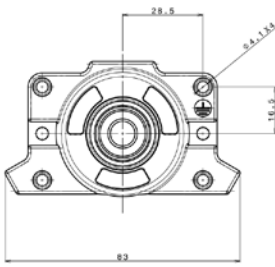
## Technical drawing



## Motor curve



## Bracket



## On Demand

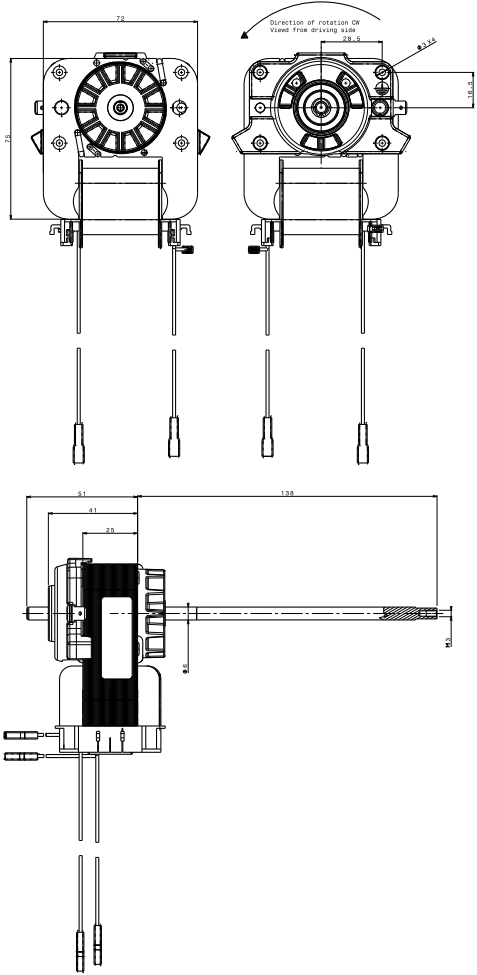
Voltage [V] & Frequency [Hz]	115VAC 50/60Hz
Input Power [W]	52,5
Rotation	CW
Protection	impedence protected
Certification/ Conformity	CE, cURus E322940, UL
Shaft end	d shape machined steel
Shaft material	X46CrS13 and stainless steel
Fan impeller [mm]	150
Connection Type	Standard tab terminal 6,3x0,8



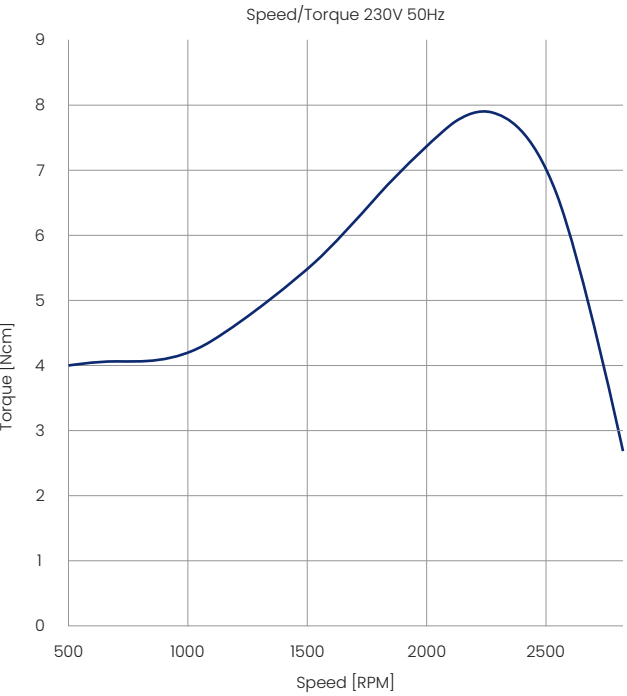
Technical Data

Stack Height [mm]	25
Motor code	55164.12330
Voltage [V] & Frequency [Hz]	230VAC 50Hz
Input Power [W]	53,5
Rotation	CW
Insulation Class	H
Protection	Thermal protector 130°C
Degreed of protection motor (IP)	IP00
Certification/Conformity	CE
Bearing or bushing	ball bearing
Stator painted for anti-corrosion	Yes
Shaft diamiter [Ø]	6
Shaft end	internal thread
Shaft material	X46CrS13
Fan impeller [mm]	Without
Connection Type	Cables
Shaft output (Bracket-fan seat) [mm]	126

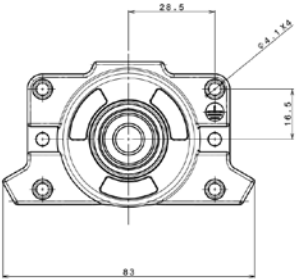
Technical drawing



Motor curve



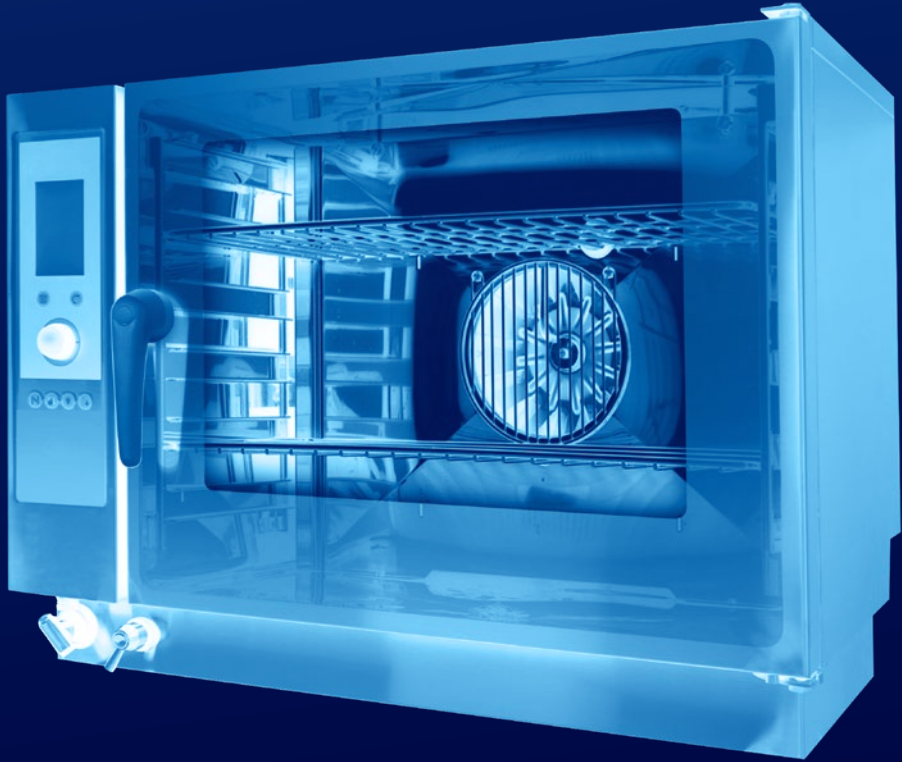
Bracket



On Demand

Input Power [W]	41,3
Rotation	CCW
Shaft material	Steel

Everel is the ideal solution for **professional sector**



To discover more about Everel solutions, scan this QR code

# On Demand:

## Flexibility and Customization

With a partnership-based approach, we provide tailored design products and also ongoing technical support, ensuring that each solution is perfectly optimized for specific applications. Our capacity for innovation and adaptation aligns with our commitment to a lasting and successful collaboration.

Thanks to a dedicated team of expert technicians, we offer a wide range of customization possibilities for our motors.

Examples of on-demand customizations include:

- |                     |  |
|---------------------|--|
| 1. Input Voltage    | 4. Nominal Speed and optional second speed |
| 2. Harnesses        |  |
| 3. Customized Shaft | 5. Additional custom requests              |

Customize your motor by providing us the following technical data:

- |  |  |
|--|--|
| • Dimensions and fixation points       | • Electrical rating                      |
| • Insulation class                     | • Protection class                       |
| • Certification / Conformity           | • Speed range                            |
| • Storage ambient temperature of motor | • Operating ambient temperature of motor |
| • Fan torque characteristic curve      |  |



[www.everelgroup.com](http://www.everelgroup.com)

Via Cavour 9 - 37067  
Valeggio sul Mincio (VR) IT

T. +39 045 6313 711  
E. [info@everelgroup.com](mailto:info@everelgroup.com)

