

CH

TYPICAL APPLICATIONS	Function selector switch
WIRING DIAGRAMAS	2 - 14 positions
CYCLE No.	Up to 30.000
AMBIENT TEMPERATURE	150 °C
GWFI	850 °C
GWFI	750 °C
ADDITIONAL FEATURES	<ul style="list-style-type: none"> ■ M4 screw mounting ■ 26 contacts version available



Thermostat version available

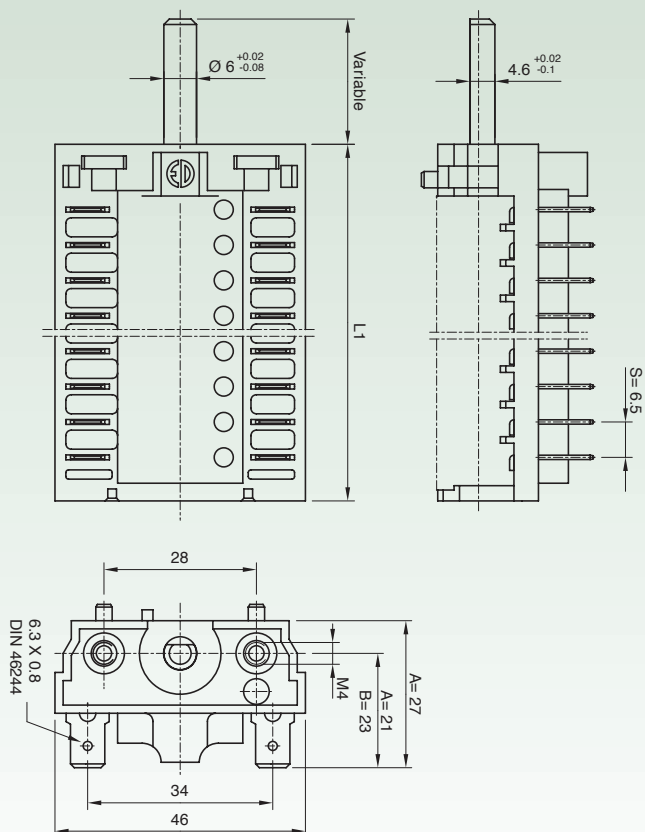
16 (6) A / 250 VAC - 30E3
 16 (8) A / 250-125 VAC - 10E3
 18 A / 250-125 VAC - 30E3
 12 A / 400 VAC - 30E3
 T150 °C

3/4 HP / 125 VAC
 18A / 250 VAC
 16A / 250 VAC
 T125 °C

According to EN61058-1 standard



DIMENSIONS



CONTACT SEQUENCE

Basic Version					
Type	Contacts		L1		Version
	16(4)/250ac 6(2)/250ac	6(1.5)/250ac	S=7	S=6.5	
1-CH	1		29,5*		A
2-CH	2		25	36*	A
3-CH	3		32	33	A
4-CH	4		39	39.5	A, B
5-CH	5		46	46	A
6-CH	6		49,5		A
6-CH	6		53	52.5	A, B
7-CH	7		59		A, B
8-CH	8		67	65.5	A, B
9-CH	9		72		A
10-CH	10		81	78.5	A, B
11-CH	11		88	85	A, B
12-CH	12		95		A
13-CH	8	5	S=7	S=6	A
			97		