

S X ? ?

SERIES

CUT OUT

DRAWING

31



○
ø 10 mm
th 0.5 ... 9 mm

33



○
ø 10 mm
th 0.8 ... 2 mm



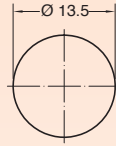
○
ø 10 mm
th 0.8 ... 2 mm



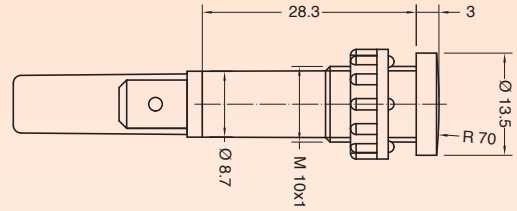
○
ø 10 mm
th 0.8 ... 2 mm

?

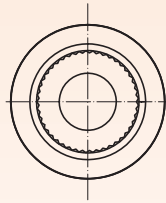
2 Mounted ring



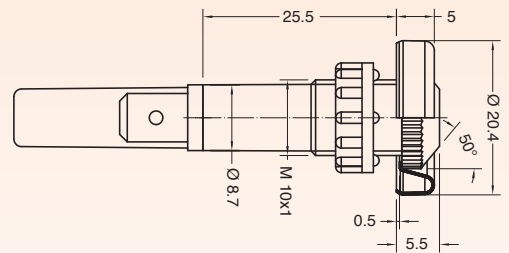
B Unmounted ring



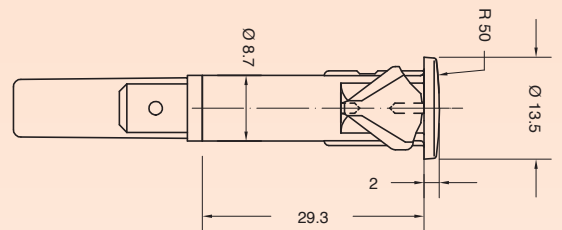
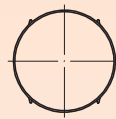
9 Mounted ring



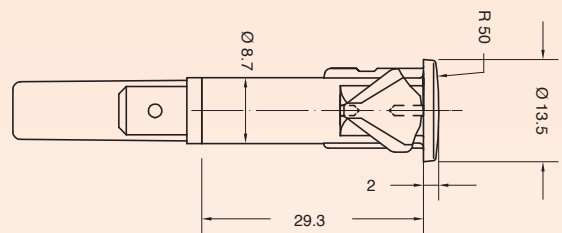
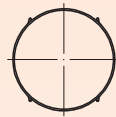
D Unmounted ring



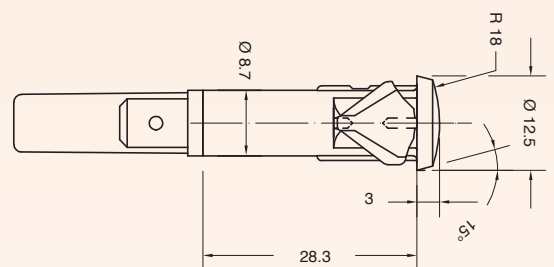
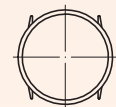
2



C With antirotation rib



H

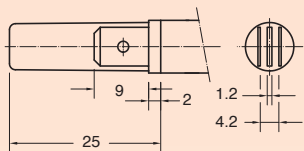


S	X	SERIES	DRAWING	TERMINAL	FUNCTION	VOLTAGE	TEMP.	COLOUR	WIRES	0	0

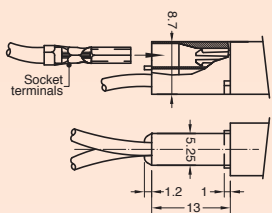
?	?	?	?	?	?	?	?	?	?	0	0
---	---	---	---	---	---	---	---	---	---	---	---

TERMINAL

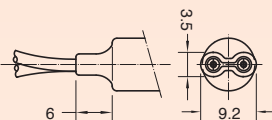
1 Tabs 6.3 x 0.8



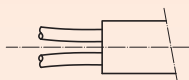
C Signal Click



K Wires crimped

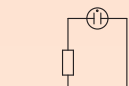


R Wires sealed



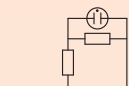
FUNCTION

1



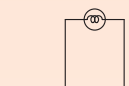
Neon or Fluorescent lamp

2



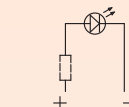
Neon or Fluorescent lamp with anti-luminescence

3



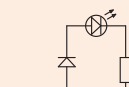
Incandescent lamp

5



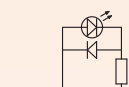
LED
DC or AC current
2 ÷ 24 V

6 Terminal 1



LED
AC current
110 ÷ 250 V

7 Terminal C - K - R



LED
AC current
110 ÷ 250 V

VOLTAGE

1 Function 5

2 V

2 Function 3 - 5

12 V

3 Function 3 - 5

24 V

4 Function 1 - 2 - 6 - 7

110 V

5 Function 1 - 2 - 6 - 7

125 V

6 Function 1 - 2 - 6 - 7

230 V

7 Function 1 - 2 - 6 - 7

250 V

8 Function 1 - 2

400 V

VDE or UL certified

?

Available on demand

X

Custom

TEMPERATURE

A

T 75 °C

1 Function 1 - 2 - 3

T 90 °C

2 Function 1 - 2

T 120 °C

3 Function 1 - 2

T 150 °C

COLOUR

ILLUMINATED ✨



WIRES

000 Terminal 1 - C

Indicator light without wires

??? Terminal K - R

Indicator light with wires

Wires Material:

- PVC (up to T90 °C)
- SILICONE (up to T200 °C)

Wires Length:

from 60 mm to 600 mm (special version available up to 1.450 mm)

Wires Ends:

- pre-stripped (from 5.5 to 18 mm)
- stripped (from 5.5 to 18 mm)
- not stripped
- crimp terminals