

S X ? ?

?

SERIES

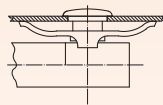
CUT OUT

DRAWING

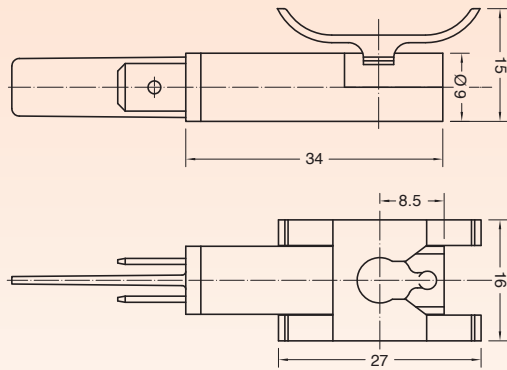
27



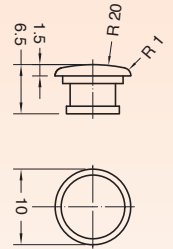
○  
ø 8 mm  
th 0.5 ... 2 mm



M No lens



P Drawing M + lens



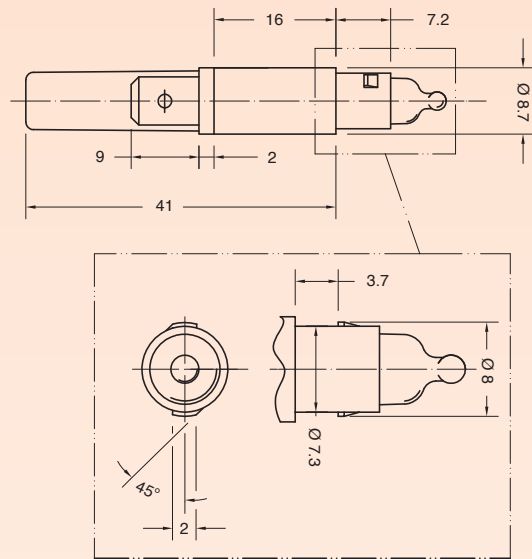
Lens available also separately SX27TP...

28

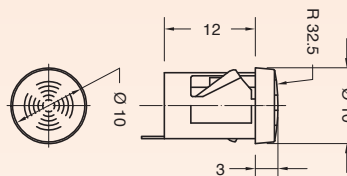


Custom

9 No lens

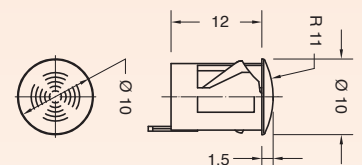


6 Drawing 9 + lens



Lens available also separately SX28T6...

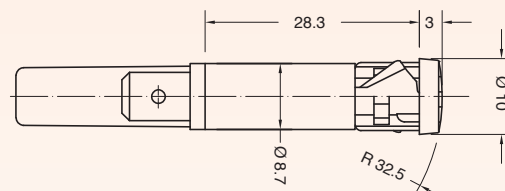
F Drawing 9 + lens



Lens available also separately SX28TF...

Further lens shapes available on demand

H One piece



○  
ø 9 mm  
th 0.5 ... 2 mm



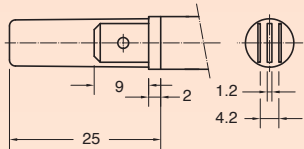
○  
ø 9 mm  
th 0.5 ... 2 mm

S	X	SERIES	DRAWING	TERMINAL	FUNCTION	VOLTAGE	TEMP.	COLOUR	WIRES	0	0

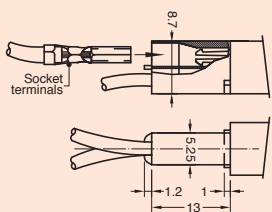
?	?	?	?	?	?	?	?	?	?	0	0
---	---	---	---	---	---	---	---	---	---	---	---

**TERMINAL**

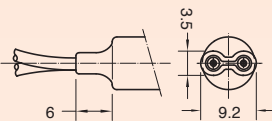
**1** Series 27 - 28  
Tabs 6.3 x 0.8



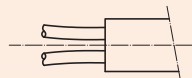
**C** Series 27 - 28  
Signal Click



**K** Series 28  
Wires crimped

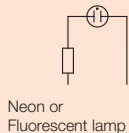


**R** Series 27 - 28  
Wires sealed

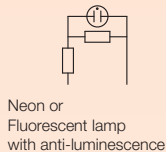


**FUNCTION**

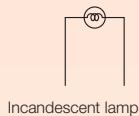
**1** Series 27 - 28



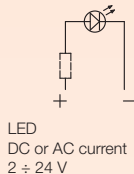
**2** Series 27 - 28



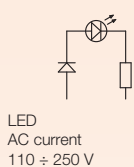
**3** Series 27 - 28



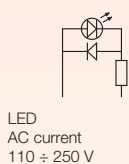
**5** Series 27 - 28



**6** Series 28  
Terminal 1



**7** Series 28  
Terminal C - K - R



**VOLTAGE**

**1** Function 5

2 V

**2** Function 3 - 5

12 V

**3** Function 3 - 5

24 V

**4** Function 1 - 2 - 6 - 7

110 V

**5** Function 1 - 2 - 6 - 7

125 V

**6** Function 1 - 2 - 6 - 7

230 V

**7** Function 1 - 2 - 6 - 7

250 V

**8** Function 1 - 2

400 V

VDE or UL certified

**?**  
Available on demand

**X**  
Custom

**TEMPERATURE**

**A**

T 75 °C

**1** Function 1 - 2 - 3

T 90 °C

**2** Function 1 - 2

T 120 °C

**3** Function 1 - 2

T 150 °C

**COLOUR**

NO LENS ✖



ILLUMINATED ✖



**WIRES**

**000** Terminal 1 - C

Indicator light without wires

**???** Terminal K - R

Indicator light with wires

Wires Material:

- PVC (up to T90 °C)
- SILICONE (up to T200 °C)

Wires Length:

from 60 mm to 600 mm (special version available up to 1.450 mm)

Wires Ends:

- pre-stripped (from 5.5 to 18 mm)
- stripped (from 5.5 to 18 mm)
- not stripped
- crimp terminals