

S X ? ?

?

SERIES

CUT OUT

DRAWING

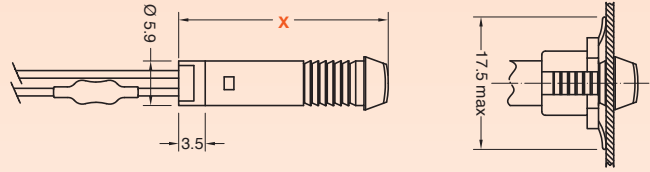
24



○
ø 6 mm
th 0.5 ... 2 mm

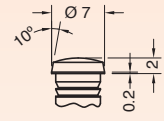
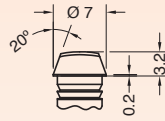


○
ø 6 mm
th 0.5 ... 1 mm

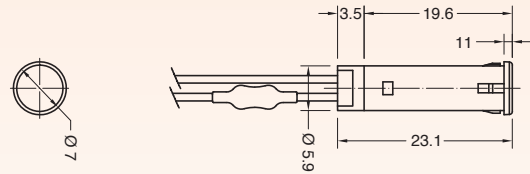


0 X = 24.2 mm

2 X = 23 mm



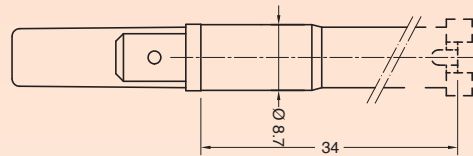
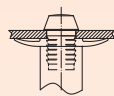
5



27



○
ø 6 mm
th 0.5 ... 3 mm

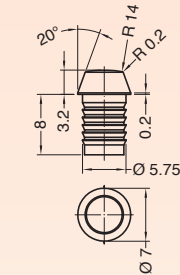
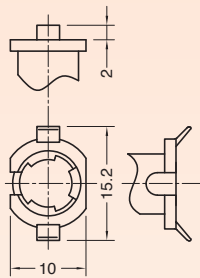


5 No lens 2 clips

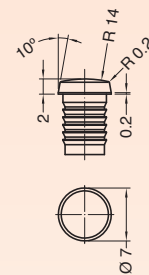
0 Drawing 5 + lens

2 Drawing 5 + lens

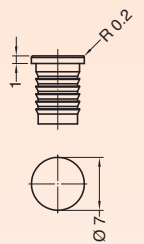
8 Drawing 5 + lens



Lens available also separately SX27T0...



Lens available also separately SX27T2...



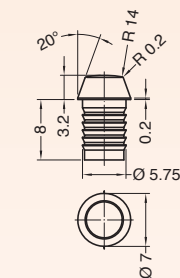
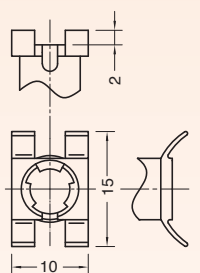
Lens available also separately SX27T8...

N No lens 4 clips

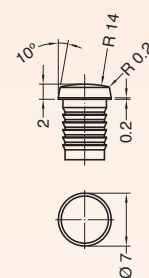
A Drawing N + lens

E Drawing N + lens

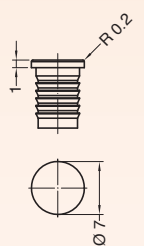
C Drawing N + lens



Lens available also separately SX27T0...



Lens available also separately SX27T2...



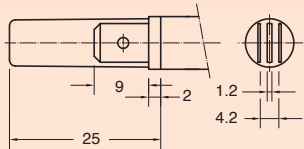
Lens available also separately SX27T8...

S	X	SERIES	DRAWING	TERMINAL	FUNCTION	VOLTAGE	TEMP.	COLOUR	WIRES	0	0
---	---	--------	---------	----------	----------	---------	-------	--------	-------	---	---

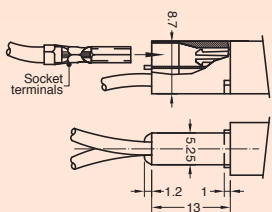
?	?	?	?	?	?	?	?	?	?	?	0	0
---	---	---	---	---	---	---	---	---	---	---	---	---

TERMINAL

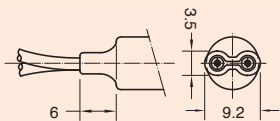
1 Series 27
Tabs 6.3 x 0.8



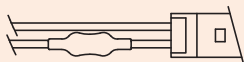
C Series 27
Signal Click



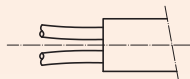
K Series 27
Wires crimped



P Series 24
Wires locked with plug

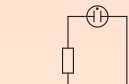


R Series 27
Wires sealed



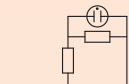
FUNCTION

1 Series 24 - 27



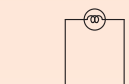
Neon or Fluorescent lamp

2 Series 27



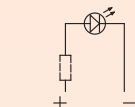
Neon or Fluorescent lamp with anti-luminescence

3 Series 27



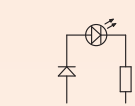
Incandescent lamp

5 Series 24 - 27



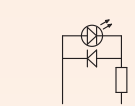
LED
DC or AC current
2 ÷ 24 V

6 Series 24 - 27
Terminal 1 - P



LED
AC current
110 ÷ 250 V

7 Series 27
Terminal C - K - R



LED
AC current
110 ÷ 250 V

VOLTAGE

1 Function 5

2 V

2 Function 3 - 5

12 V

3 Function 3 - 5

24 V

4 Function 1 - 2 - 6 - 7

110 V

5 Function 1 - 2 - 6 - 7

125 V

6 Function 1 - 2 - 6 - 7

230 V

7 Function 1 - 2 - 6 - 7

250 V

8 Function 1 - 2

400 V

VDE or UL certified

?

Available on demand

X

Custom

TEMPERATURE

A

T 75 °C

1 Function 1 - 2 - 3

T 90 °C

2 Function 1 - 2

T 120 °C

3 Function 1 - 2

T 150 °C

COLOUR

SERIES 24

ILLUMINATED ✖

G red

H orange

E green

L white

SERIES 27

Drawing 5 - N

NO LENS ✖

0 red light

1 green light

Drawing 0 - 2 - 8 - A - C - E

ILLUMINATED ✖

G red

H orange

E green

L white

X ?
custom

WIRES

000 Terminal 1 - C

Indicator light without wires

??? Terminal K - P - R

Indicator light with wires

Wires Material:

- PVC (up to T90 °C)
- SILICONE (up to T200 °C)

Wires Length:

from 60 mm to 600 mm (special version available up to 1.450 mm)

Wires Ends:

- pre-stripped (from 5.5 to 18 mm)
- stripped (from 5.5 to 18 mm)
- not stripped
- crimp terminals