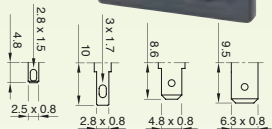
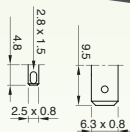


# STS

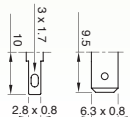
**STS3**  
C14  
Class I  
T 70 °C



**STS5**  
C16  
Class I  
T 120 °C



**STS2**  
C18  
Class II  
T 70 °C



**10 A / 250 VAC**  
EN 60320

10 A / 250 VAC  
15 A / 125 VAC  
UL 498

**TYPICAL APPLICATIONS** Coffee machine, appliance inlet for cold/warm conditions with/without earthing contact, for "snap in" fastening

**WIRING DIAGRAMAS**

- 2-pole
- 2-pole + earth

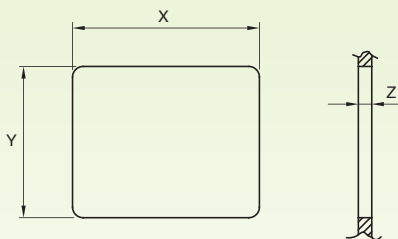
**CUT OUT** 27x20 mm

**GWT** 850 °C

**GWT NO FLAME (<2sec)** 750 °C on demand

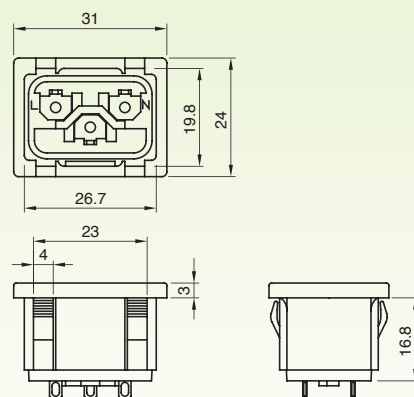


## CUT OUT



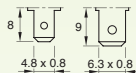
Z	X	Y
1 ... 1,8	27	20,0 +0,2
1,8 ... 3,0	27	20,2 +0,2

## DRAWING



# SFS

**SFS2**  
H  
Class II  
T 70 °C



**SFS3**  
F  
Class I  
T 70 °C



**10 A / 250 VAC**  
EN 60320

10 A / 250 VAC  
15 A / 125 VAC  
UL 498

**TYPICAL APPLICATIONS** Small appliances, appliance outlet for cold conditions with/without earthing contact, for "snap in" fastening

**WIRING DIAGRAMAS**

- 2-pole
- 2-pole + earth

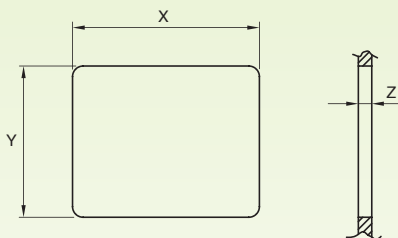
**CUT OUT** 32x25 mm

**GWT** 850 °C

**GWT NO FLAME (<2sec)** 750 °C on demand



## CUT OUT



Z	X	Y
1 ... 1,8	32,5	25,0 +0,2
1,9 ... 3,0	32,5	25,2 +0,2

## DRAWING

