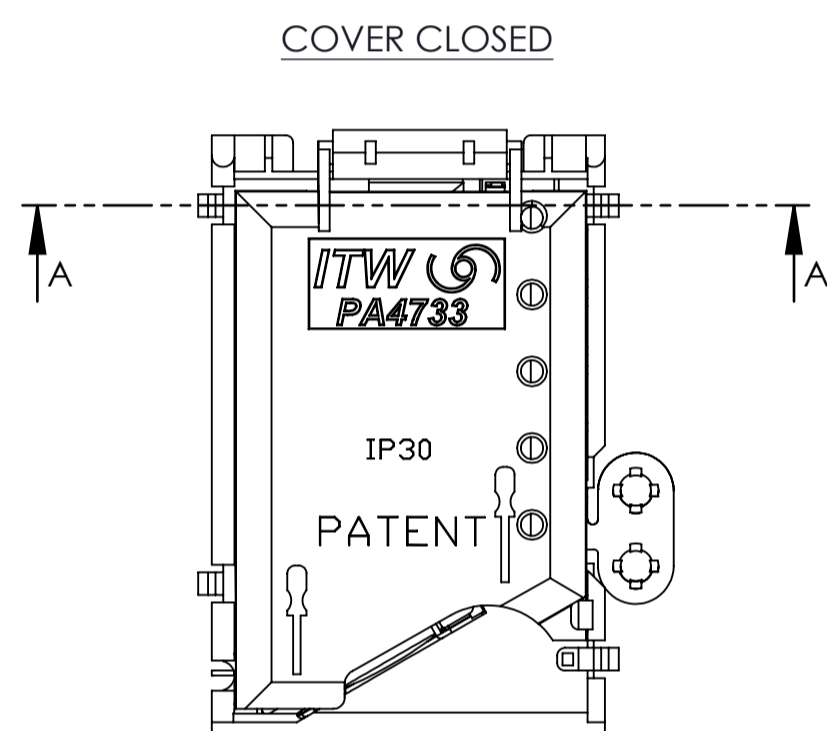
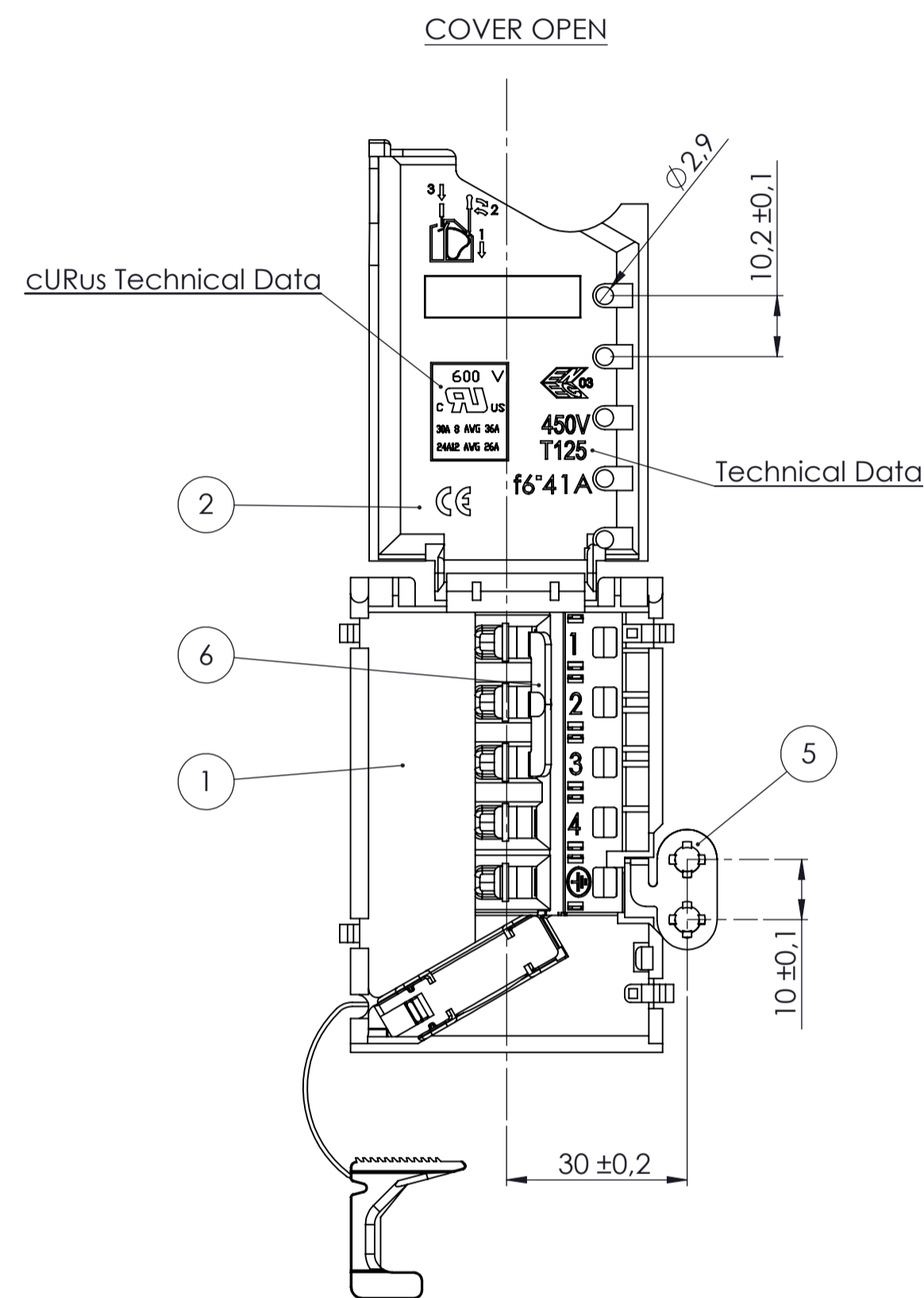
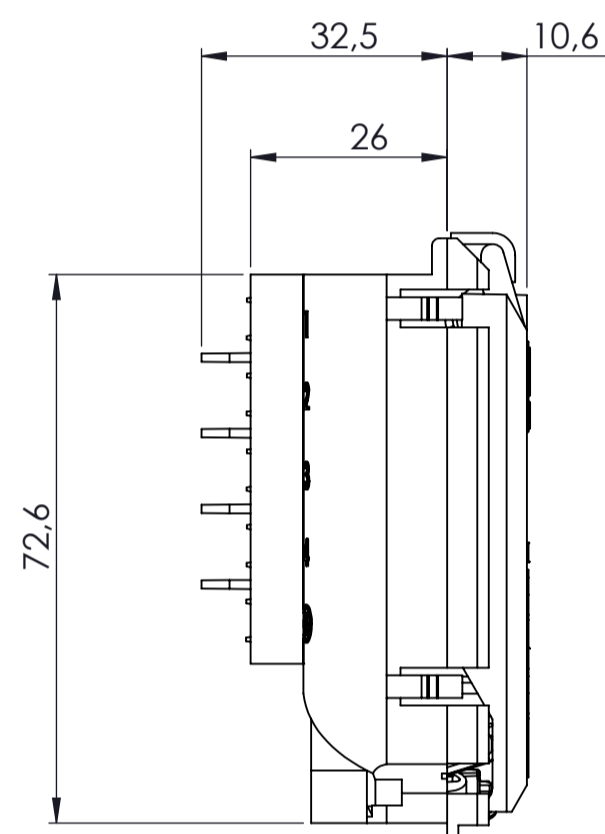


SEZIONE A-A

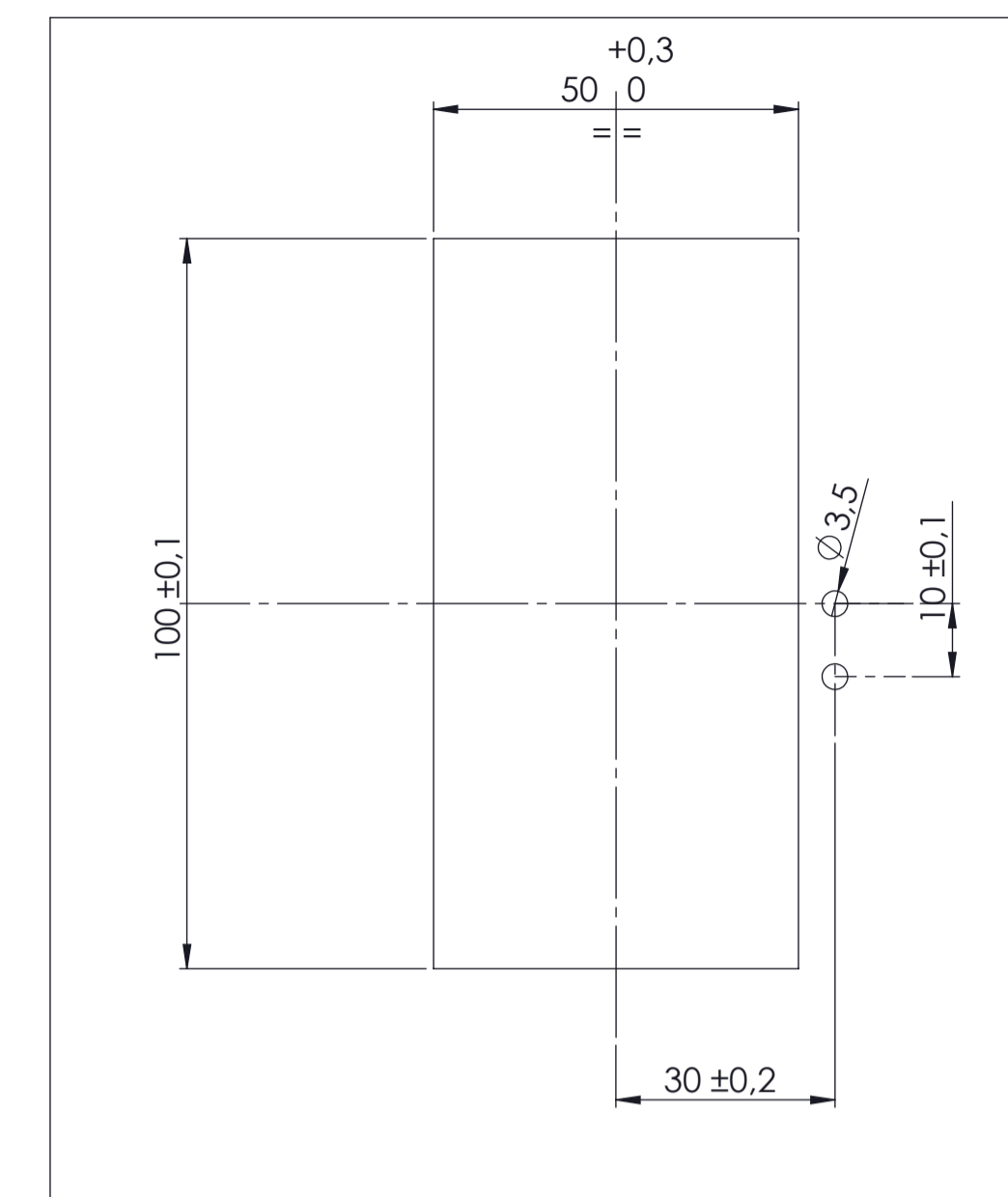


COVER CLOSED



COVER OPEN

TECHNICAL DATA	
Rated insulation voltage	450 V
Rated current	41A (3 tabs connected)
Rated connecting capacity	6sqmm (max external Ø 13)
Conductor type	Flexible
Number of poles	5 Poles
Tabs	6,3x0,8
Ambient temperature	-5° / 125°C
Protection degree	IP30
Plastic material	PA66 - V2
Terminal Block screw	/
Cable clamp screw	/
Min. thickness	/
Kind of construction	/
TORQUE WRENCH SETTING	
Terminal screws	/
Cable clamp screw	/



PANEL CUT-OUT THICKNESS from 0.6 to 2 mm.

PART LIST						
RIF.	Denomination	ITW CODE	E.M.	Q.tà	COLOR	NOTE
1	PA4733-BODY	60-6615-1301	0	1	Black	
2	PA4733-COVER	60-6616-1301	0	1	Black	
3	PA4731-CONTACT	60-6606-FEZN	0	4		
4	PA4731-SPRING	60-6607-AC00	0	5		
5	PA4733-GROUNDING CONTACT	60-6617-FEZN	0	1		
6	PA4731-BRIDGE	60-6608-FEZN	0	2		
7				0		

0	0	0	0	E.M.
			PA4733/5PE/SL / BR 1-2-3	DEMOMINATION
			99-6615-1301	CODE
1	2	3	4	POLE

<b>SL</b>	Screwless connection.
<b>WCK</b>	With cover closed
<b>BR</b>	Bridge assembled into the T.B. (followed by the poles number where bridge assembled).
<b>WSA</b>	With screw assembled in the cable clamp
<b>WS</b>	With screw for cable clamp supplied into the box
<b>K</b>	Cover supplied separately
<b>NF</b>	No Flame material
<b>E</b>	With Grounding Plate or earth bracket.

Symbols Denomination

FOR MISSING DIMENSIONS: SEE THE 3D MODEL OR 2D DRAWING.

2	16/05/12	Modificato assemblaggio posizione ponticelli 1-2-3, era 1-2/4-5.	
		Aggiornato denominazione disegno: 996615_DSP01	Armaroli
1	27/01/11	Ridisegnato come PA4733, era AD0301.	Armaroli
EM	DATA	Descrizione	Progettista
Modifiche ( Change)			

Disegno eseguito con sistema cad Non sono ammesse variazioni o modifiche manuali

PROPRIETA ITW FASTEX ITALIA S.p.A. - IL PRESENTE DISEGNO NON PUO ESSERE UTILIZZATO, PRODOTTO O COMUNICATO A TERZI SENZA PREVENTIVA AUTORIZZAZIONE. OGNI VIOLAZIONE SARA PERSEGUITA A TERMINI DI LEGGE

PER PARTI NON QUOTATE		QUOTE FUNZIONALI	
Angolo di sovrapposizione (Data separata)	Spessore (Thickness)	Raggio (Radius)	Q
Materiali (Material)	Trattamento (Treatment)	Scala Normale (Scale)	1:1
Superficie (Finishing)	Colori (Color)	Cap. Normale (Cap. Normal)	
		CEI EN 60335-1	
		CEI EN 60998-1/2	
		CEI EN 61210	
Nome	Denominazione	Classe Funzionale	
		PA4733/5PE SCREWLESS	
Nome	N° Disegno (Part N°)	996615_DSP01	
Verificato (Checked)	Chirumbolo	P.D.	4733

UNI EN 22788

ITW Industrial Components S.r.l.  
 ITW Fastex  
 ITW Ispracontrols  
 ITW Metaflex  
 Cooking & Heating Group

Exp. Mod (Sheet N°) -

