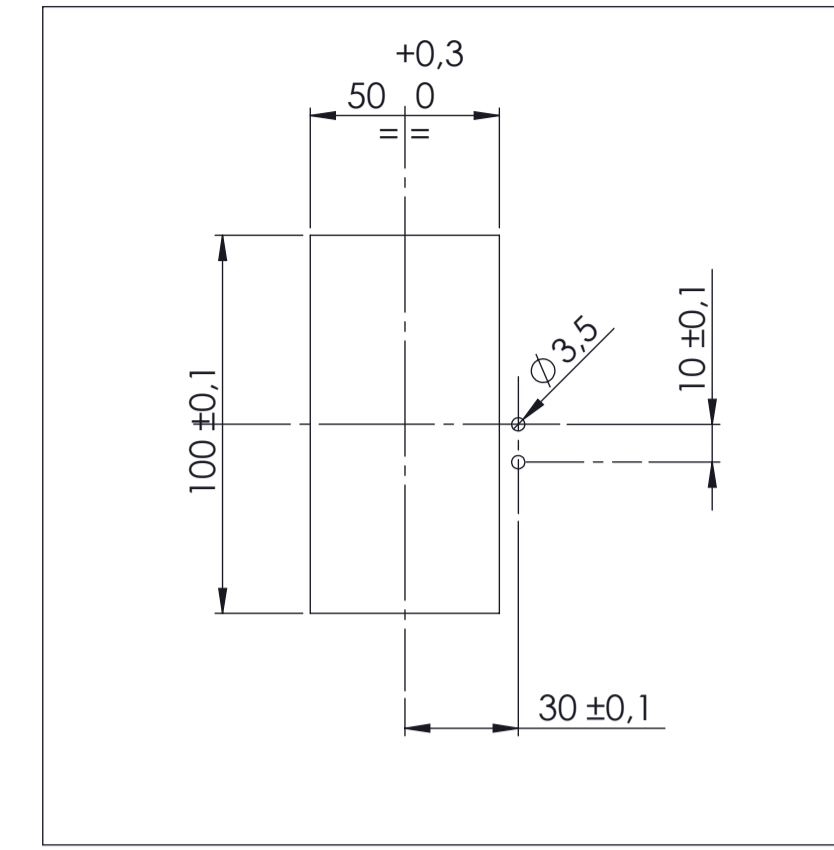


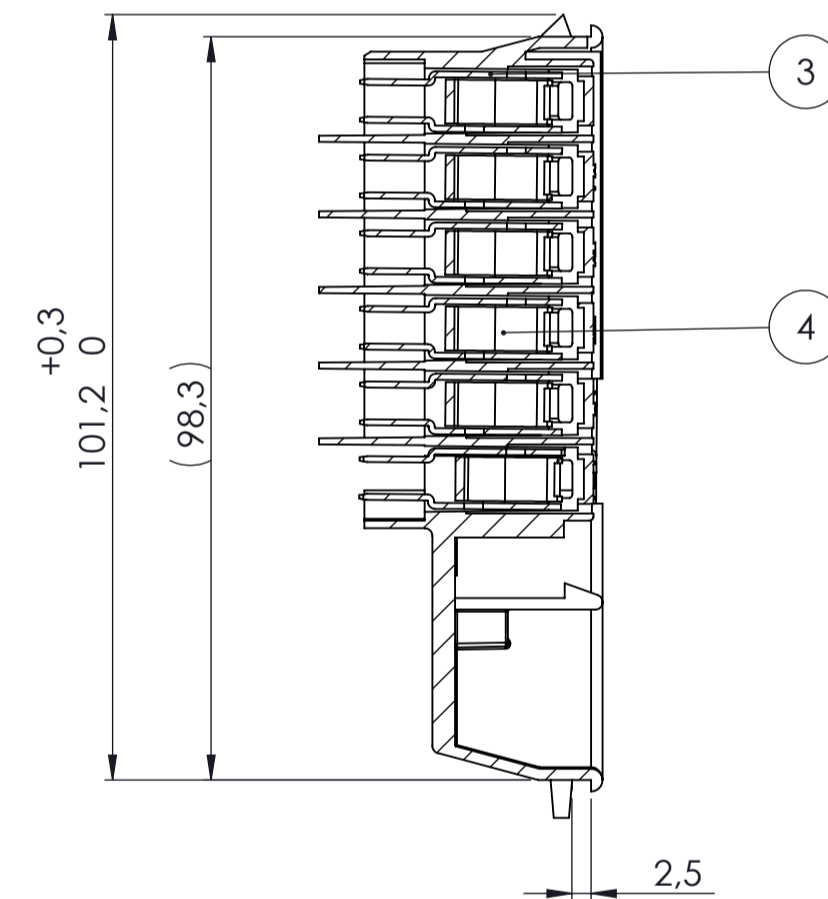
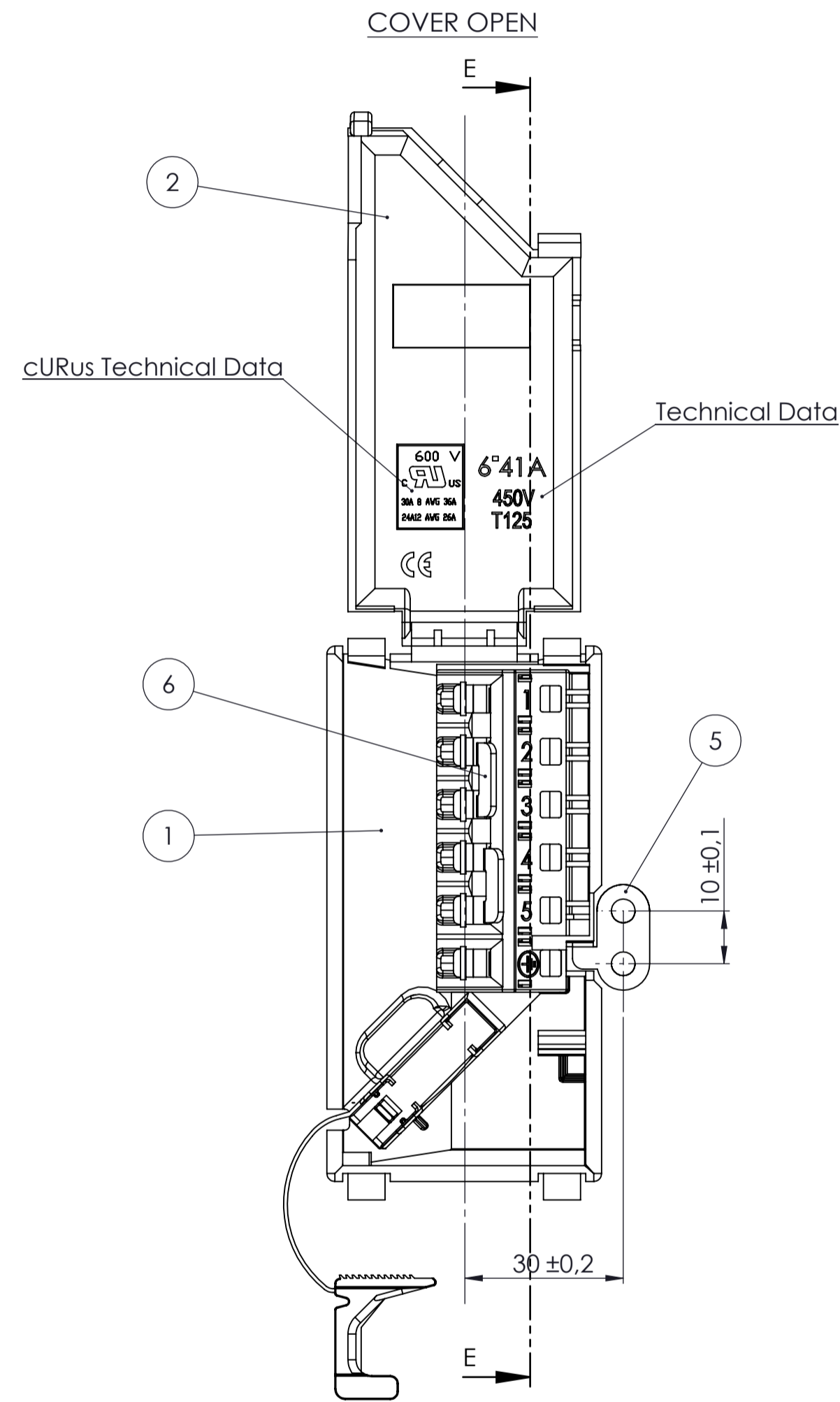
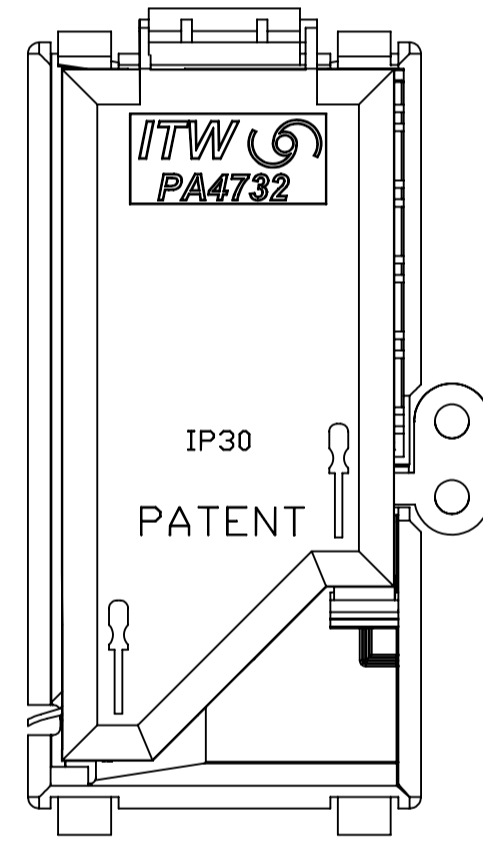
TECHNICAL DATA	
Rated insulation voltage	450 V
Rated current	41 A (3 tabs connected)
Rated connecting capacity	6 sqmm (max external \varnothing 13)
Conductor type	Flexible
Number of poles	6 Poles
Tabs	6.3x0.8
Ambient temperature	-5° / 125° C
Protection degree	IP30
Plastic material	PA66 - V2
Terminal Block screw	/
Cable clamp screw	/
Min. thickness	
Kind of construction	
TORQUE WRENCH SETTING	
Terminal screws	/
Cable clamp screw	/



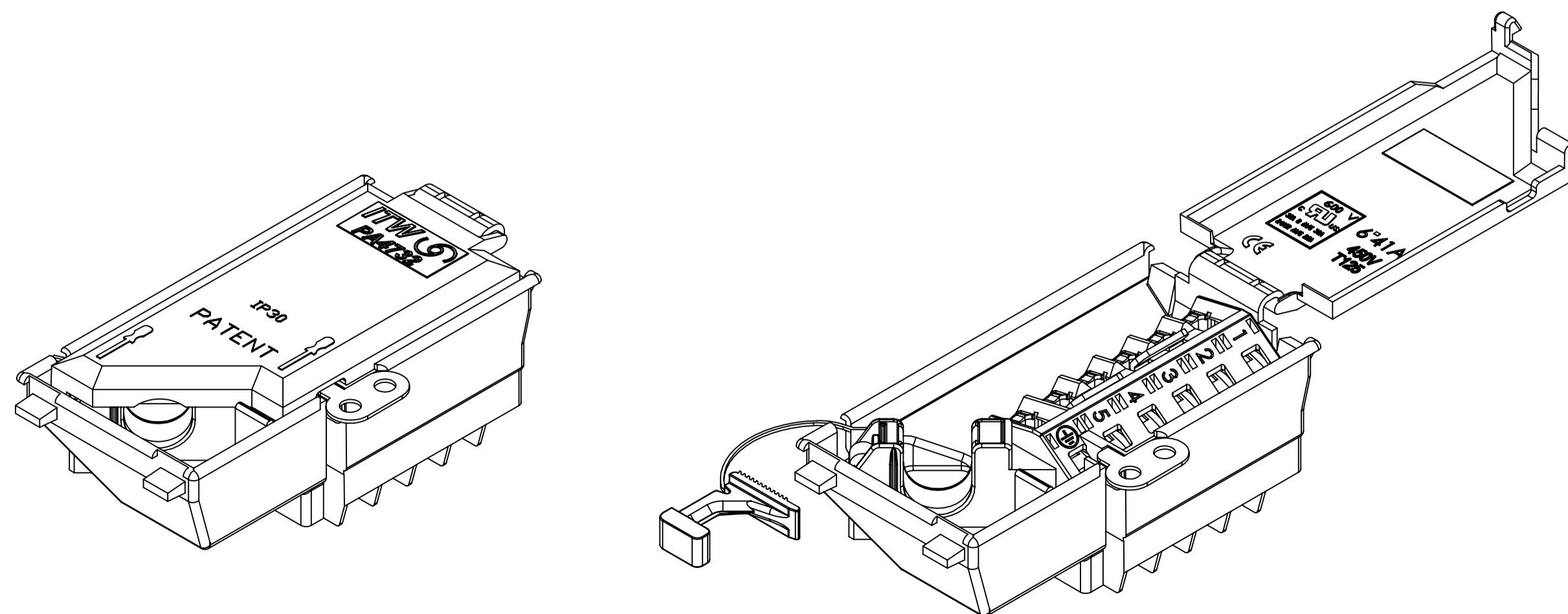
PANEL CUT-OUT THICKNESS from 0.6 to 2 mm

Preliminary

COVER CLOSED



SEZIONE E-E
SCALA 1 : 1



PART LIST						
RIF.	Denomination	ITW CODE	E.M.	Q.tà	COLOR	NOTE
* *	1	PA4732-BODY	60-6610-1301	0	1	Black
* *	2	PA4732-COVER	60-6613-1301	0	1	Black
2 5	3	PA4731-CONTACT	60-6606-FEZN	0	/	
3 6	4	PA4731-SPRING	60-6607-AC00	0	/	
* *	5	PA4732-GROUNDING-CONTACT	60-6614-FEZN	0	1	
* *	6	PA4731-BRIDGE	60-6608-FEZN	0	3	

PA4732/3PE/SL/B-VERSION	PA4732/6PE/SL/B-VERSION / BR 1-2-3/4-5	0	0	E.M.	DENOMINATION
99-6613-1301	99-6610-1301	0	0	0	CODE

SL	Screwless connection.
WCK	With cover closed
BR	bridge assembled into the T.B. (followed by the poles number where bridge assembled).
WSA	With screw assembled in the cable clamp
WS	With screw for cable clamp supplied into the box
K	Cover supplied separately
NF	No Flame material
E	With Grounding Plate or earth bracket.

Symbols Denomination

FOR MISSING DIMENSIONS: SEE THE 3D MODEL OR 2D DRAWING.

2	14/05/12	Eliminato codici BODY 6066111301 e 6066121301. Eliminato relativi codici prodotto finito: 9966111301 / 9966121301 / 9966141301 / 9967011301. Rinominato codice disegno 996610_DSP01.	Armaroil
1	26/01/11	Ridisegnato come PA4732, era AD030K / AD030-KB / AD030-KR5. <td>Progettista</td>	Progettista

Modifiche (Change)

Disegno eseguito con sistema cad Non sono ammesse variazioni o modifiche manuali

PROPRIETA ITW FASTEX ITALIA S.p.A. - IL PRESENTE DISEGNO NON PUO ESSERE UTILIZZATO, PRODOTTO O COMUNICATO A TERZI SENZA PREVENTIVA AUTORIZZAZIONE. OGNI VIOLAZIONE SARA PERSEGUITA A TERMINI DI LEGGE

PER PARTI NON QUOTATE		QUOTE FUNZIONALI	
Angolo di sovrapposizione (Data separata)	Spessore (Thickness)	Raggio (Radius)	Q
Materiali (Material)	Trattamento (Treatment)	Cap.Norma (Label)	CEI EN 60335-1
Superficie (Finishing)	Colori (Color)	CEI EN 60998-1/2	CEI EN 61210
Dimensioni (Dimensions)	Forme (Shapes)	CEI EN 61210	

UNI EN 22768

Per tutti i riferimenti vedere: Per il disegno: m. per dim. esagerati v. Per il titolo: m. per dim. reali v. Per le note: m. per note (dim. v.) Per le note: m. per note (dim. v.) Per le note: m. per note (dim. v.)

Materiali (Material) - Scale (Scale) 1:1

Trattamento (Treatment) - Cap.Norma (Label) CEI EN 60335-1

Superficie (Finishing) - Forme (Shapes) - gr. CEI EN 60998-1/2

Colori (Color) - Dimensioni (Dimensions) - Armairail CEI EN 61210

Data (Date) 26/01/2011

Visto (Checked) Chirumbolo

N° Disegno (Part N°) P.D. 4732

N° Disegno (Part N°) 996610_DSP01

Exp. Mod (Rev N°) -

ITW Industrial Components S.r.l.

ITW Fastex ITW G. Elettronica

ITW Ispracontrols

ITW Metallflex

Cooking & Heating Group

Classe Funzionale - A1

Denominazione: PA4732/6PE SCREWLESS