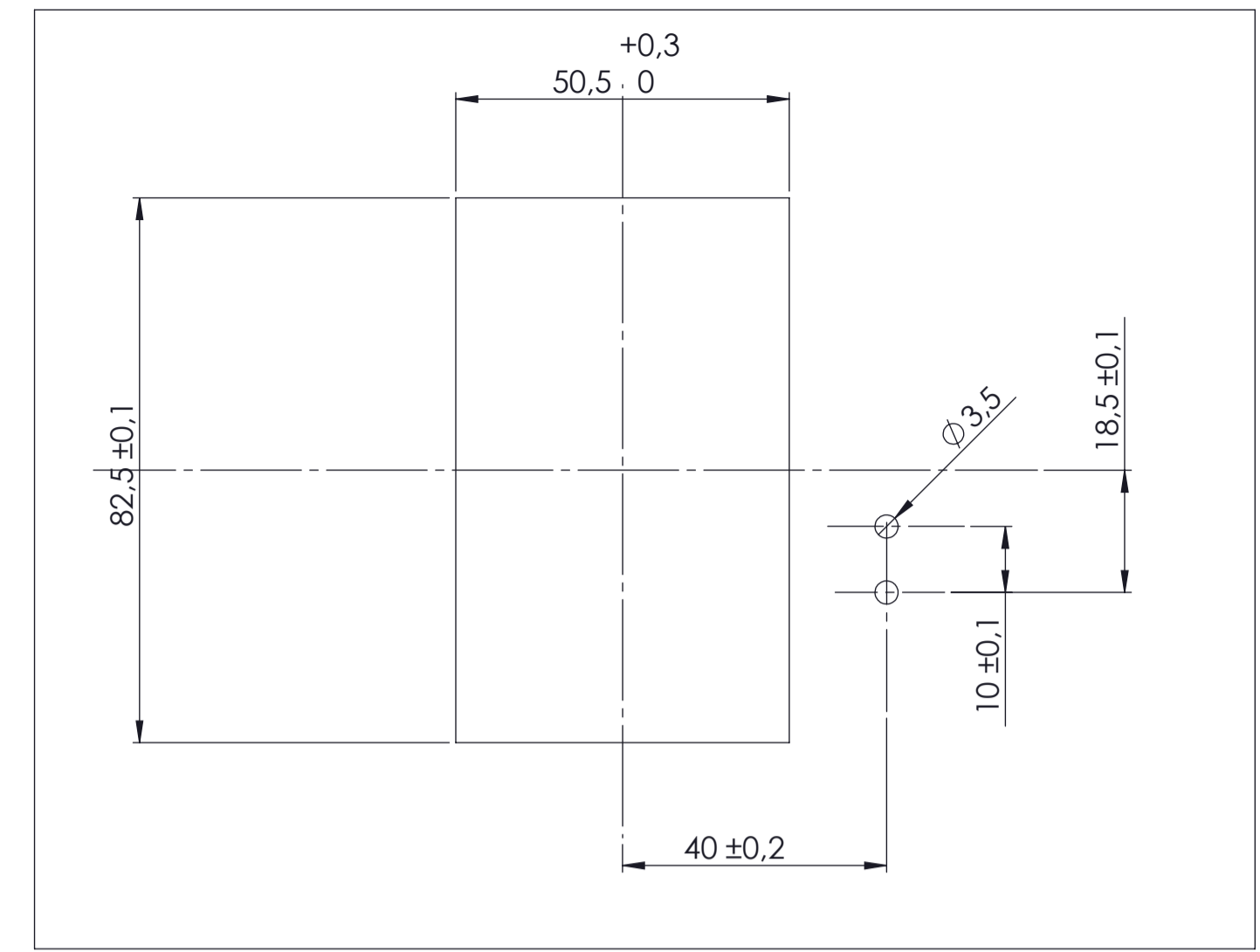
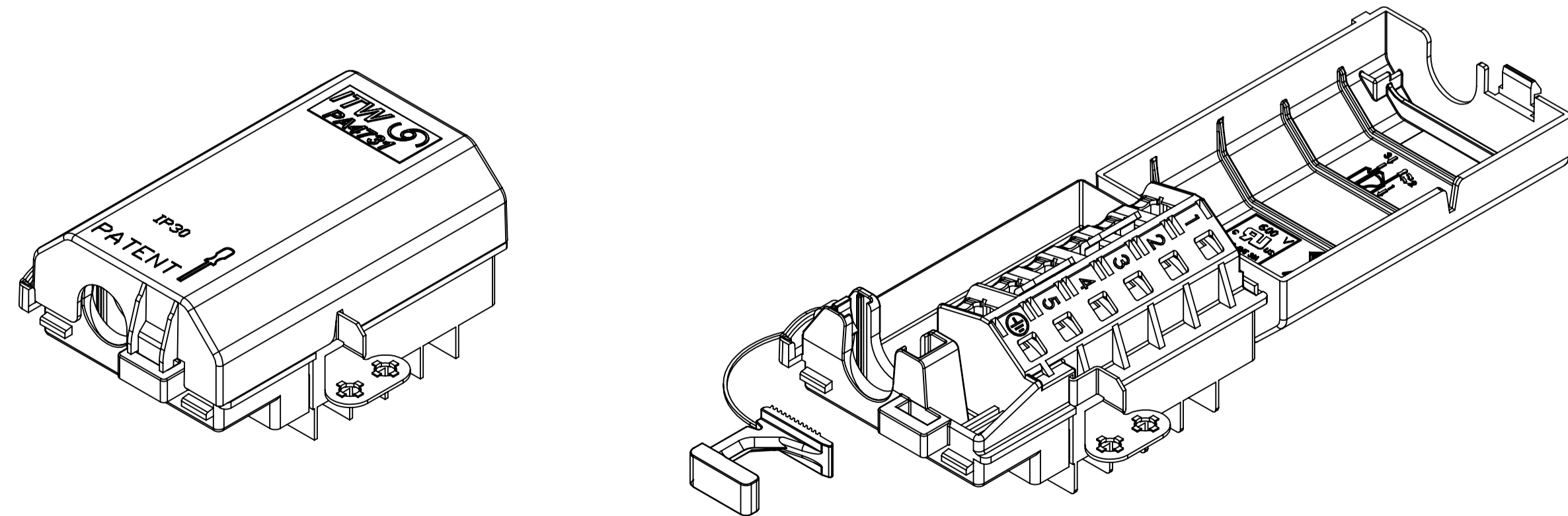
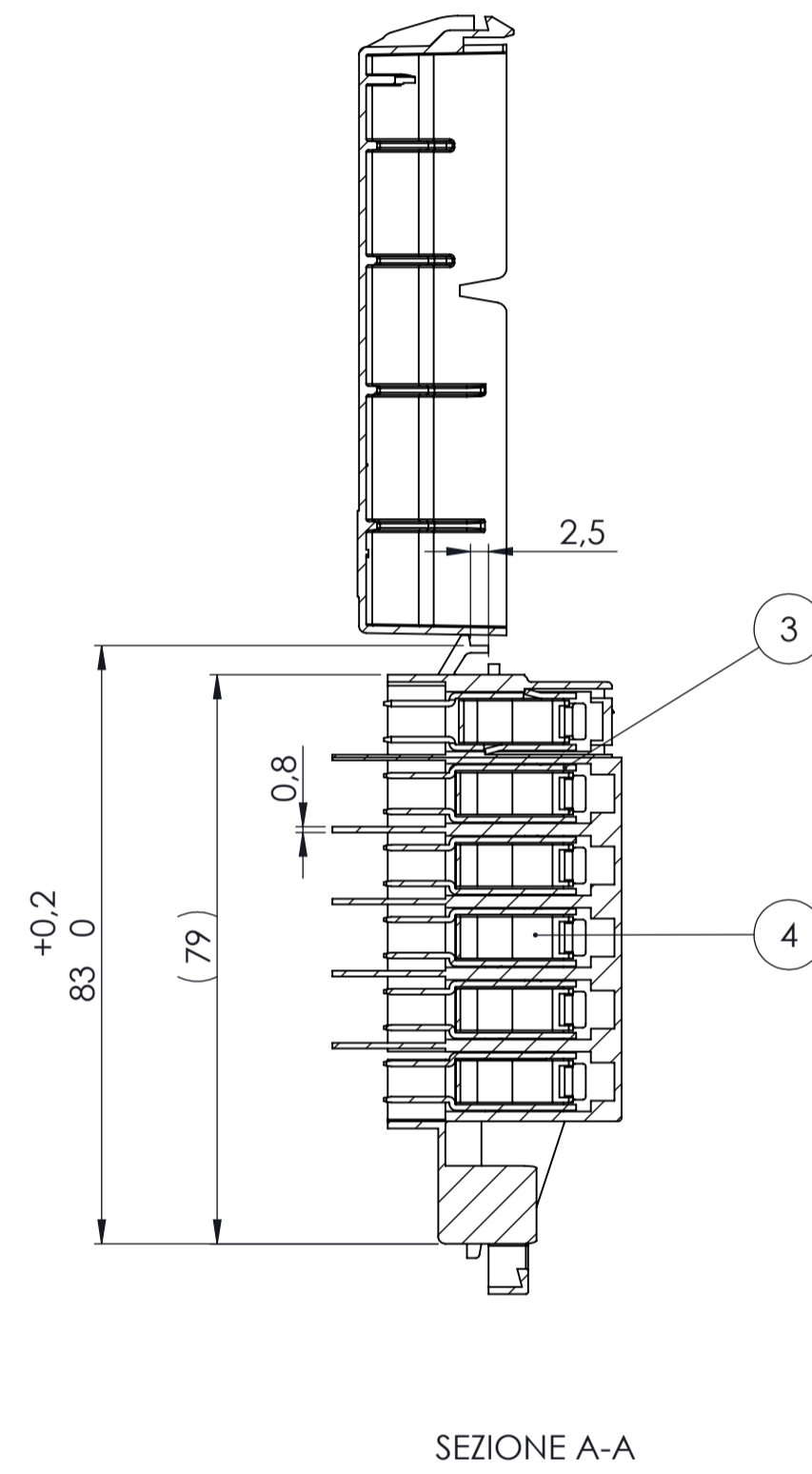
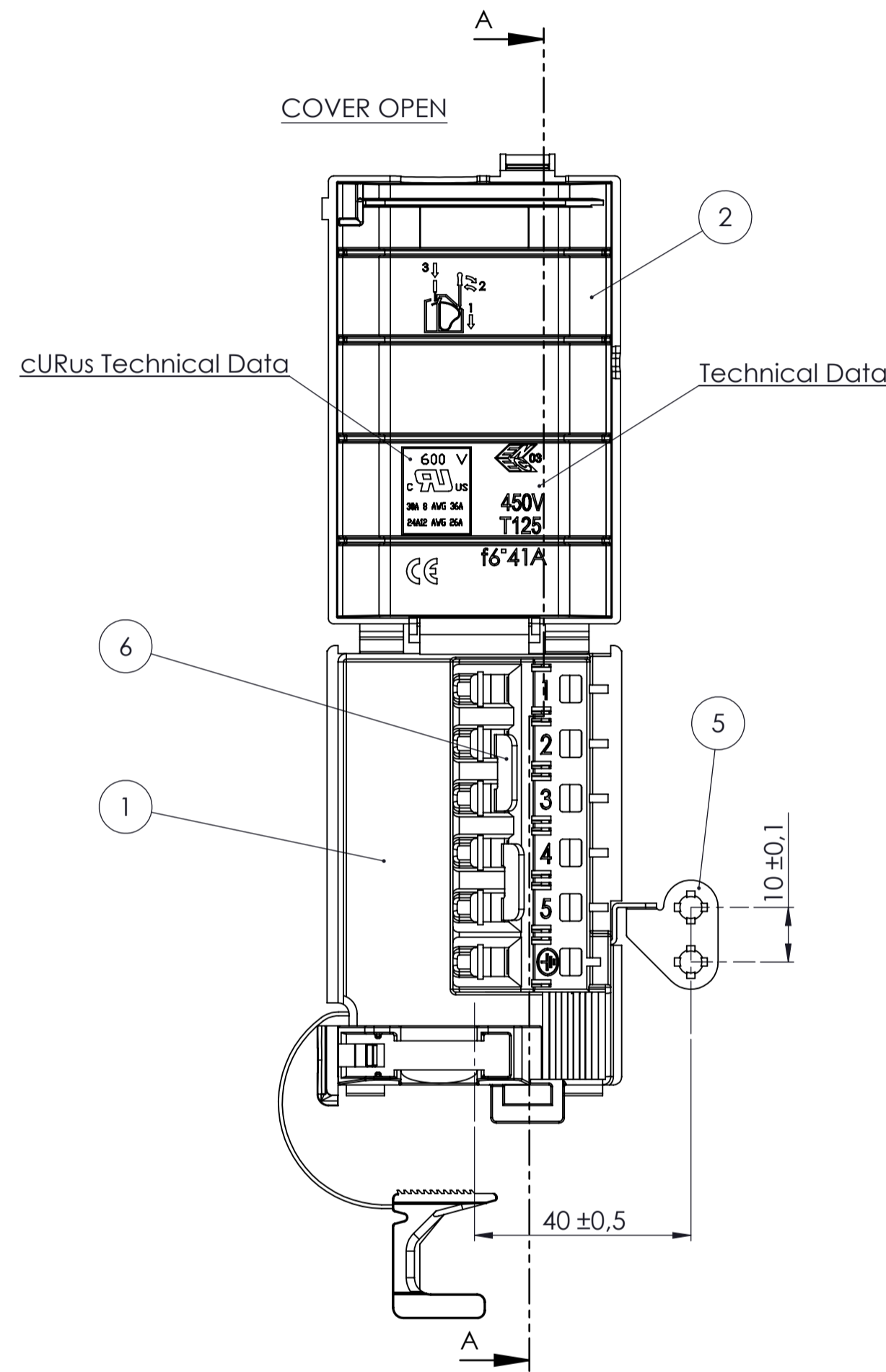
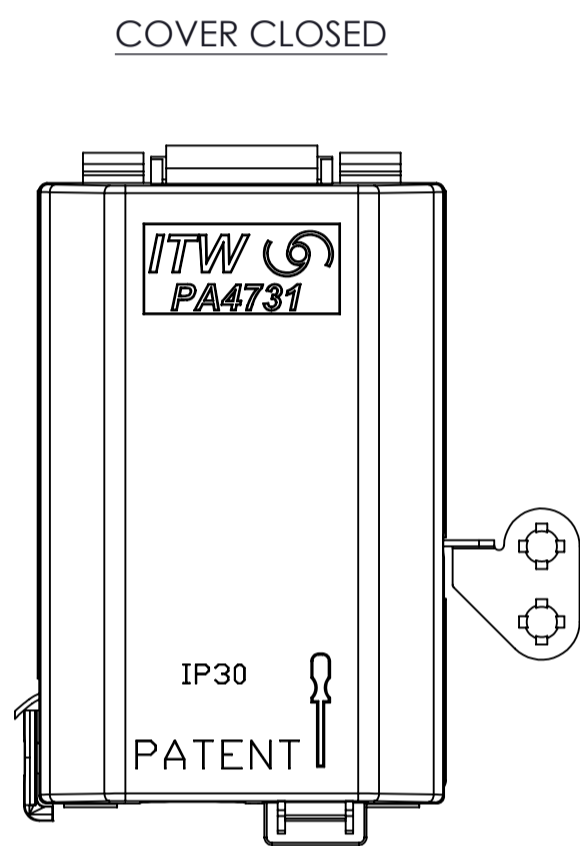


TECHNICAL DATA	
Rated insulation voltage	450V
Rated current	41A (3 tabs connected)
Rated connecting capacity	6sqmm (max external Ø13)
Conductor type	Flexible
Number of poles	6 Poles
Tabs	6.3x0.8
Ambient temperature	-5° / 125°C
Protection degree	IP30
Plastic material	PA66 - V2
Terminal Block screw	/
Cable clamp screw	/
Min. thickness	/
Kind of construction	/
TORQUE WRENCH SETTING	
Terminal screws	/
Cable clamp screw	/



PANEL CUT-OUT THICKNESS from 0.6 to 2mm



Preliminary

PART LIST						
RIF.	Denomination	ITW CODE	E.M.	Q.tà	COLOR	NOTE
1	PA4731-BODY	60-6602-1301	0	1	Black	
2	PA4731-COVER	60-6605-1301	0	1	Black	
3	PA4731-CONTACT	60-6606-FEZN	0	/		
4	PA4731-SPRING	60-6607-AC00	0	/		
5	PA4731-GROUNDING CONTACT	60-6609-FEZN	0	1		
6	PA4731-BRIDGE	60-6608-FEZN	0	3		

PA4731/6PE/SL	PA4731/3PE/SL/B-VERSION	PA4731/6PE/SL/B-VERSION / BR 1-2-3/4-5	CODE	DENOMINATION	E.M.
0	0	0			
1	2	3	4	5	6
2	3	4	5	6	
3	4	5	6		
4	5	6			
5	6				
6					

SL	WCK	BR	WSA	WS	K	NF	E
Screwless connection.	With cover closed	Bridge assembled into the T.B. (followed by the poles number where bridge assembled).	With screw assembled in the cable clamp	With screw for cable clamp supplied into the box	Cover supplied separately	No Flame material	With Grounding Plate or earth bracket.

Symbols Denomination

FOR MISSING DIMENSIONS: SEE THE 3D MODEL OR 2D DRAWING.

Rev.	Date	Description	Author
3	14/05/12	Eliminato codici BODY 6066031301 e 6066041301. Eliminato relativi codici prodotto finito: 9966031301 / 9966041301 / 9966061301 / 9966071301. Rinominato codice disegno 996602_DSP01.	Armaroli
2	01/12/11	Aggiunto nuovo codice 9967721301, PA4731/6PE/SL.	Armaroli
1	25/01/11	Ridisegnato come PA4731, era AD030 / AD030-B / AD030-R5.	Armaroli

Disegno eseguito con sistema cad Non sono ammesse variazioni o modifiche manuali

PROPRIETÀ ITW FASTEX ITALIA S.p.A. - IL PRESENTE DISEGNO NON PUÒ ESSERE UTILIZZATO, PRODOTTO O COMUNICATO A TERZI SENZA PREVENTIVA AUTORIZZAZIONE. OGNI VIOLAZIONE SARÀ PERSEGUITA A TERMINI DI LEGGE

UNI EN 22768	PER PARTI NON QUOTATE	ITW Industrial Components S.r.l.
Materiali	Quote Funzionali	ITW Fastex
Treatmenti	Scale	ITW Ispracontrols
Superficie	Cap.Norma	ITW Metallflex
Colori	Cap.Norma	Cooking & Heating Group
Classe Funzionale	Classe Funzionale	PA4731/6PE SCREWLESS
25/01/2011	4731	996602_DSP01