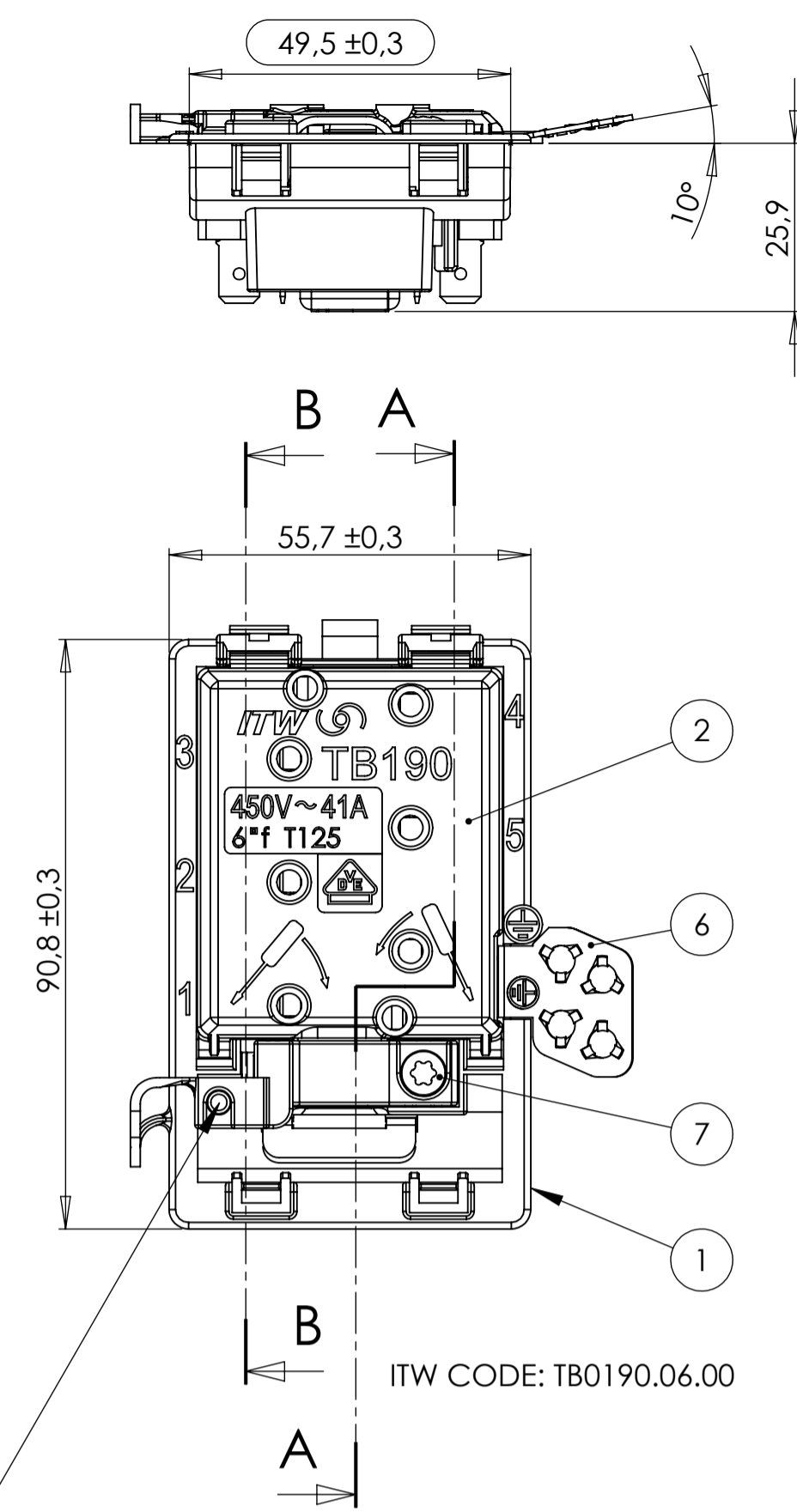
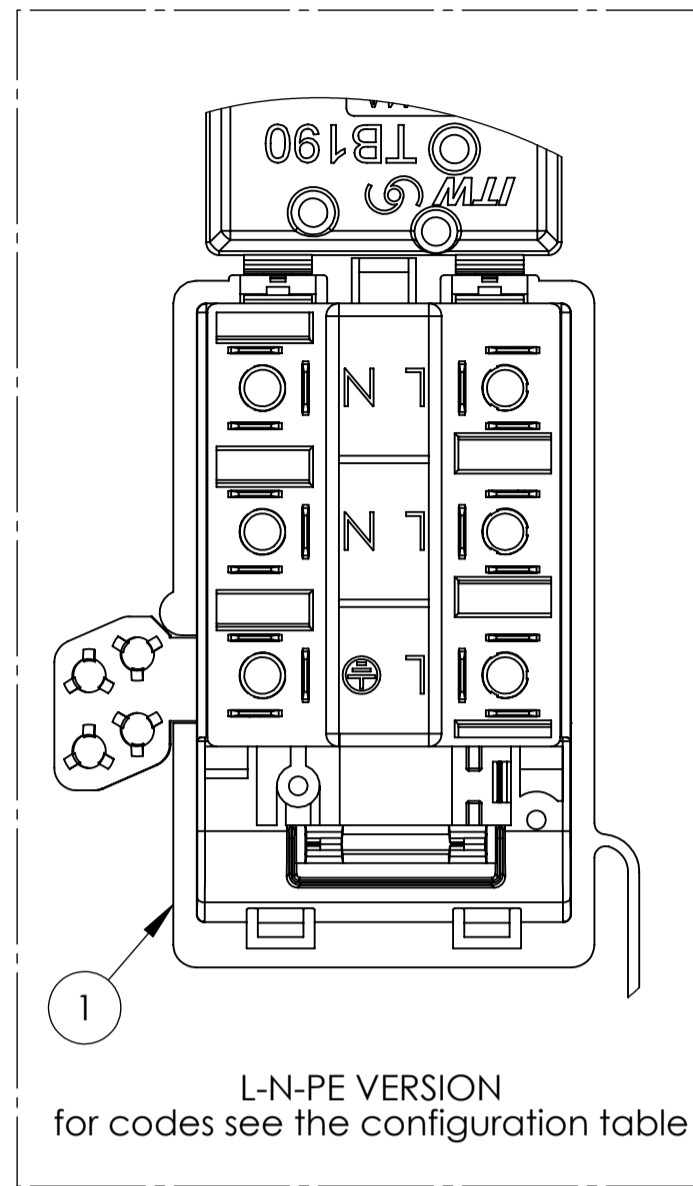
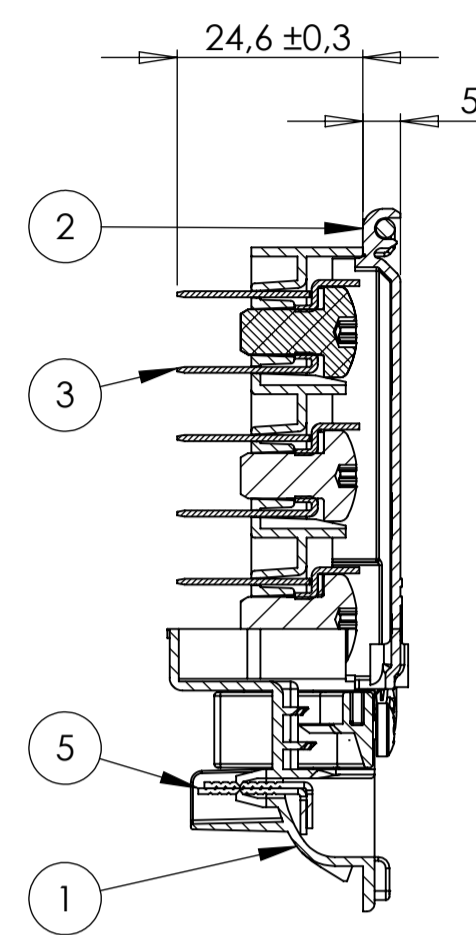


SEZIONE B-B

3 Auxiliary screw (tie side) is used only for Canadian market. Torque wrench setting 0.5+/-0 Nm at 650 rpm

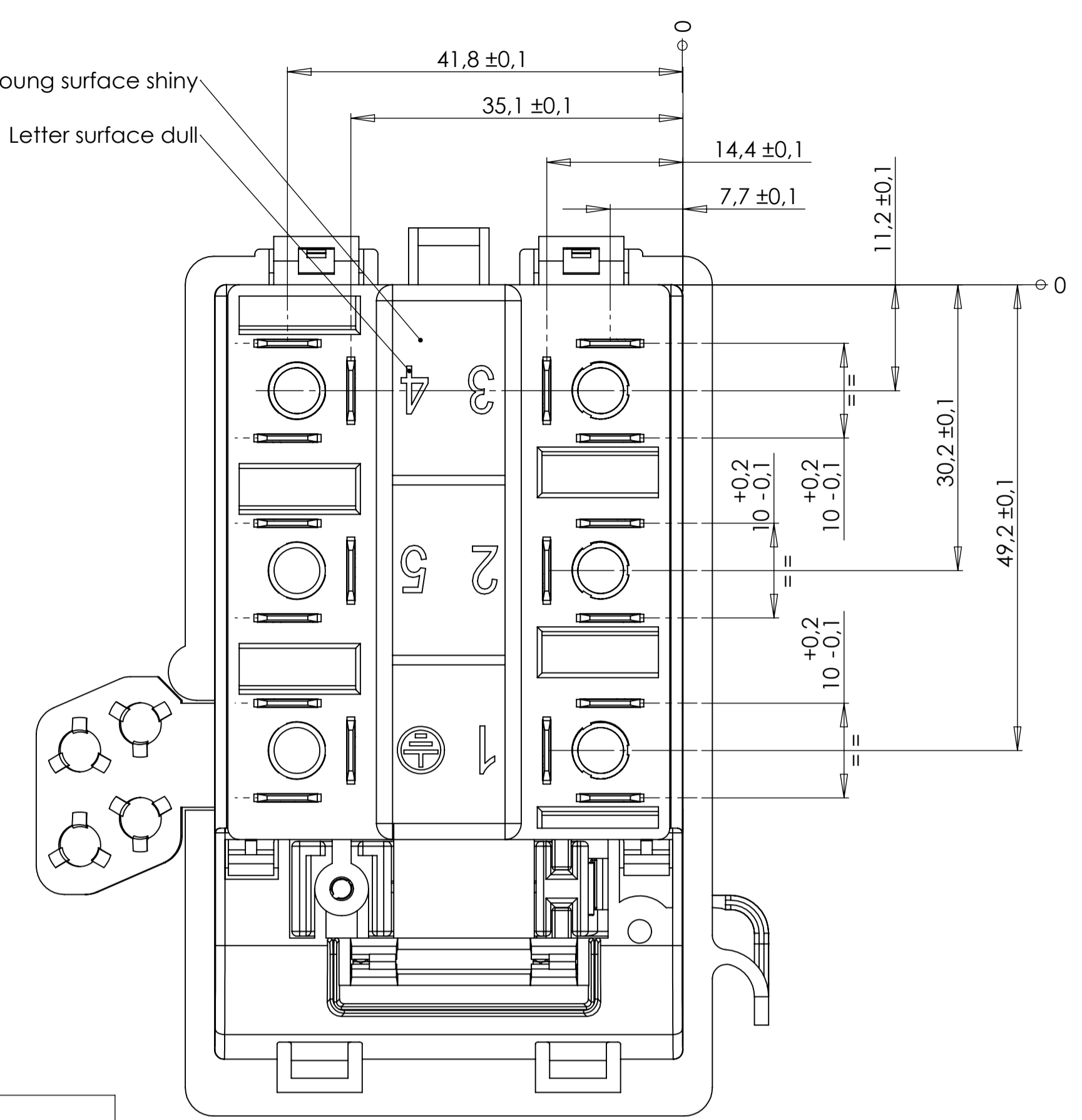


SEZIONE A-A

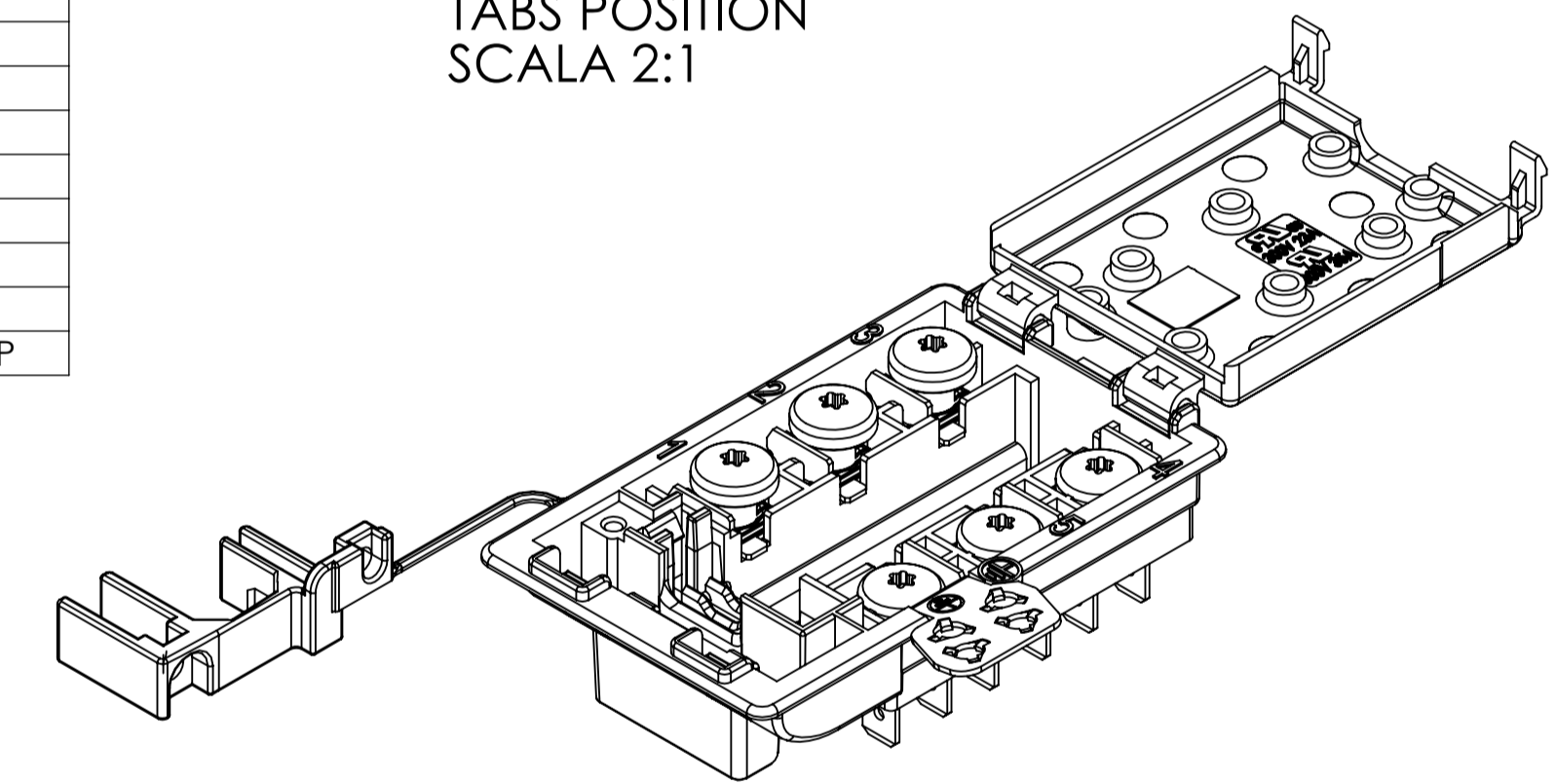


Background surface shiny

Letter surface dull

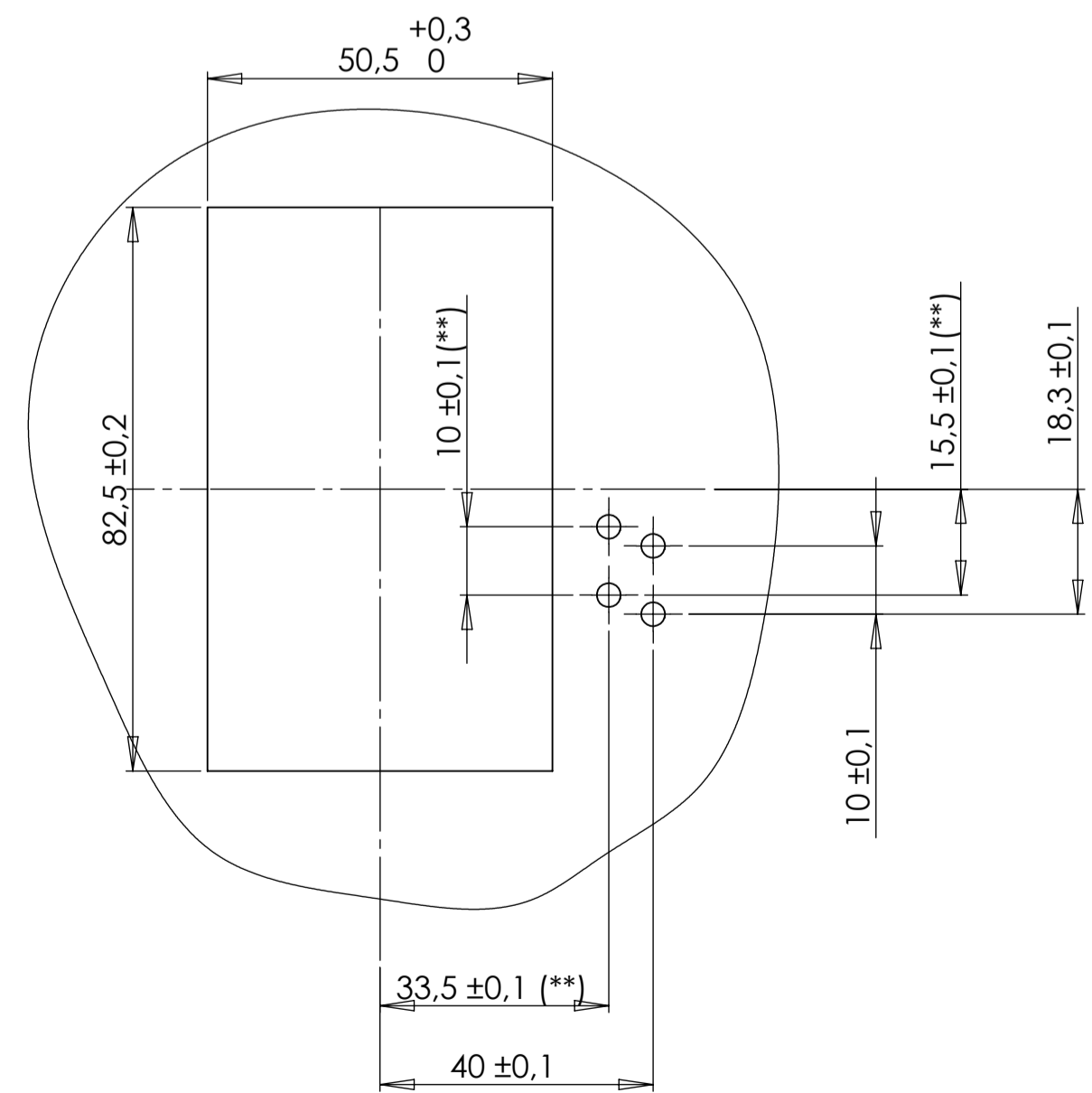


TABS POSITION
SCALA 2:1



NOTES:
 -COVER: pulling force to remove: min. 50N
 -BRIDGE: when it is assembled on the terminal block, torque wrench setting: 2+0,1/-0 Nm (*)
 -GROUNDING PLATE: when it is assembled on the terminal block, torque wrench setting: 2+0,1/-0 Nm (*)
 -CONTACT FASTON'S 6,3x0,8: according to EN 61210. Pull out force >80 N.
 -SCREW M6x11 T20: jointed with an 6mm² wire inserted must withstand without any damage 5x an assembly/disassembly with an electric screw driver adjusted to 2+0,1/-0 Nm at 650 rpm.
 -SCREW 3,5x19 T20: jointed must withstand without any damage 5x an assembly/disassembly with an electric screw driver adjusted to 0,8+0,1/-0 Nm at 650 rpm.
 -Max wiring diameter 17mm
 -Min wiring diameter 9,5mm

(*) Value for the the wiring connection.



PANEL CUT OUT THICKNESS: 0.7-1.5mm
 (**) alternative for grounding plate fixing

RIF.	Denomination	ITW CODE	COLOR	NOTE
1	190 BODY 1-5-PE	1905572F0100	BLACK	GW7 750° (2sec.) - GWFI 850°
1	190 BODY L-N-PE	1905662F0100	BLACK	GW7 750° (2sec.) - GWFI 850°
2	190 COVER	1905582F0100	BLACK	GW7 750° (2sec.) - GWFI 850°
3	CONTACT 3 TABS	140167FENI00		Nikel plated steel
4	SCREW M6X11 TORX T20	140170FEZN01		Zinc plated steel
5	BRIDGE 19mm	140169OT0000		Brass
6	GROUNDING PLATE	140168FEZN00		Zinc plated steel
7	SCREW 3.5X19 TORX T20	606459FEZNA		SUPPLIED IN THE CARTON BOX
7	SCREW 3.5X19 TORX T20	606459FEZNA		ASSEMBLED IN THE CABLE CLAMP

Symbol	Description
WCK	With cover closed
BR	Bridge assembled into the T.B. (followed by the poles number where bridge is assembled)
WSA	With screw assembled in the cable clamp
K	Cover supplied separately
NF	No Flame plastic material
WS	With screw for cable clamp supplied into the box
E	With Grounding Plate or earth bracket.

TERMINAL BLOCK CONFIGURATION	DESCRIPTION											CODE	
N	5	4	3	2	1	L	1	1	1	1	1	TB0190.06.04.01	TB190/6P/NF/WSA/BR4-5/WCK L-N
N	5	4	3	2	1	L	1	1	1	1	1	TB0190.06.03.01	TB190/6PE/NF/WSA/BR4-5/WCK L-N
N	5	4	3	2	1	L	1	1	1	1	1	TB0190.05.03.01	TB190/5P/NF/WSA/WCK
N	5	4	3	2	1	L	1	1	1	1	1	TB0190.05.01.01	TB190/5PE/NF/WSA
N	5	4	3	2	1	L	1	1	1	1	1	TB0190.03.00.01	TB190/3PE/NF/WSA/WCK
N	5	4	3	2	1	L	1	1	1	1	1	TB0190.04.02.01	TB190/4P/NF/WSA/WCK
N	5	4	3	2	1	L	1	1	1	1	1	TB0190.04.01.01	TB190/4PE/NF/K
N	5	4	3	2	1	L	1	1	1	1	1	TB0190.04.00.01	TB190/4P/NF/K
N	5	4	3	2	1	L	1	1	1	1	1	TB0190.05.00.01	TB190/5P/NF/K
N	5	4	3	2	1	L	1	1	1	1	1	TB0190.06.02.01	TB190/6PE/NF/WSA/BR4-5/WCK
N	5	4	3	2	1	L	1	1	1	1	1	TB0190.06.01.01	TB190/6P/NF/K
N	5	4	3	2	1	L	1	1	1	1	1	TB0190.06.00.01	TB190/6P/NF/WSA/BR4-5/WCK

TECHNICAL DATA			
Property	UM	EU RATING	US RATING
Rated insulation voltage	V rms	450V	300V
Rated current	A rms	41A (3 tabs connected)	35A
Rated connecting capacity	mm ²	6mm ²	8 - 22 AWG
Conductor type		Flexible	
Number of poles	n.	3 - 6	
Tabs		6,3x0,8	
Ambient temperature	°C	T125	
Protection degree	IP	IP20	
Plastic material		According to EN 60335-1 GW7 750° (2sec.) / GWFI 850°	
Terminal Block screw		M6 x 11 Torx T20	
Cable clamp screw		3.5x19 Torx T20	
Min. thickness			
Kind of construction			
TORQUE WRENCH SETTING			
Terminal screws		2 N/m (650rpm)	18 lb/in
Cable clamp screw		0.8 N/m (650 rpm)	7 lb/in

* Torque values indicated in the table are for the assembly process.
 3.5 +/-0.5: is the position of the screw M6x11
 Empty box: contact not assembled

Rev.	DATA	Descrizione	Progettista
8	31/01/14	Modified metric-screw head: from T25 to T20. Modified screw-plast head: from T10 to T20. Updated assembled codes. Added new code version: TB0190.05.03.	Amaroli
7	23/01/14	Description: TB190/5P/NF/WCK. Added new code version: TB0190.05.01.	Amaroli
6	12/11/13	Description: TB190/5PE/NF/WSA. Added new code version: TB0190.04.01.	Amaroli
5	24/09/13	Added new code version: TB0190.06.04. Description: TB190/6P/NF/WSA/BR4-5/WCK L-N.	Amaroli
4	01/03/13	Updated plastic components codes	Chirumbolo
3	21/02/13	Added note for auxiliary screw screwing and changed tolerances in the sec. B-B (was 81.8+0.5/-0)	Chirumbolo
2	20/12/12	Removed recycling mark from the body and cover. Updated UL mark	Chirumbolo
1	17/09/12	Updated drawing to the dimensional report and configurations	Chirumbolo

Disegno eseguito con sistema cad **SolidWorks**. Non sono ammesse variazioni o modifiche manuali.

PROPRIETA ITW FASTEX ITALIA S.p.A. - IL PRESENTE DISEGNO NON PUO ESSERE UTILIZZATO, PRODOTTO O COMUNICATO A TERZI SENZA PREVENTIVA AUTORIZZAZIONE. OGNI VIOLAZIONE SARA PERSEGUITA A TERMINI DI LEGGE

PER PARTI NON QUOTATE		Industrial Components S.r.l.	
Angolo di ripresa (Dist. spec.)	Spostarsi (Thickness)	Spigoli (Radius)	
QUOTE FUNZIONALI			
Materiali	Scale (Scale)	1:1	
Treatmenti	Cap.Norma (Reflex)	EN60998-1	
Superficie (Finishing)	Press (Press)	EN60998-2-1	
Colori (Color)	Dim. (Dim)	Chirumbolo	
Materiali	Cap.Norma (Reflex)	EN61210	
Class. Funzionale	Nome	Classe Funzionale	A1
		TB190	
		BUILT IN TERMINAL BLOCK	
UNI EN 22786	Per il disegno di riferimento vedere il file di progetto in formato .dwg (da usare solo per scopi di riferimento) Param. da: m, mm (da usare in base a: m, mm) Param. di: m, mm (da usare in base a: m, mm) Param. di: mm (da usare in base a: mm)	Versione (Version)	1.0
Data (Date)	12/04/2012	Verificato (Checked)	
P.D.	PR190	N° Disegno (Part No)	TB0190_DSP01
Rev. Mod (Rev. N°)		Exp. Mod (Rev. N°)	0

OLD REF. PD: 4768