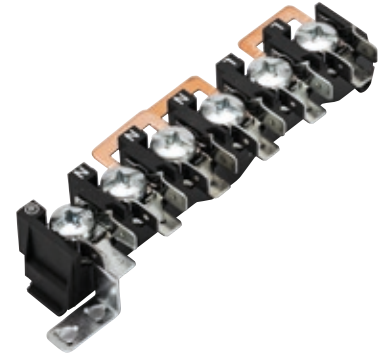




MORSETTERA SNAP-IN VITE/FASTON 5 POLI + TERRA KL350E CON PONTI

SCREW TO TAB TERMINAL BLOCK SNAP-IN WITH 5 POLES + GROUND KL350E WITH SHUNT



DATI TECNICI / TECHNICAL DATA

	EUROPA	USA
Sezione cavo / Cable section	1,5 ÷ 10 mm ²	18-8 AWG
Tensione nominale / Nominal Voltage	450 V	300 V
Corrente max / Max. Rating	57A	41A
Temp. d'esercizio / Working Temperature	T 150°C	T 130°C
Grado di protezione / Protection degree	IP 00	
Corpo isolante / Plastic material	PA66 - GF25% - CLASS V-0 - GWT 750°C	
Numero poli / Number of poles	5 + E	
Coppia di serraggio / Tightening torque	0.5-1.0 Nm - Max. 2.5 Nm	
Dima di foratura / Cut out	Vedi disegno tecnico / Refer to technical drawing	
Parti metalliche / Metal parts	M6 zinc plated steel screw; 6,3X0,8 zinc plated steel tab insert; zinc plated steel grounding tab; Shunt insert made in copper (where assembled).	

Approvals	Standard References
VDE 	DIN EN 60998-1:2005-03; EN 60998-1:2004; DIN EN 60998-2-1: 2005-03; EN 60998-2-1:2004 DIN EN 61210 2011-06; EN 61210:2010
UL CSA 	1-UL Standard: UL 1059 Standard for terminal blocks Edition 4 Rev.Date 2011-10-14 2-Canadian Standard: CSA C22.2 NO.158-10 terminal blocks Edition 3-Issue Date 2010-03-01

PACKAGING

Type	Poli / Poles	P-N	Pack.	Peso / Weight	Misure / Size
KL350E 5P 3BK	5 + E	3MRN07029508	150 pz.	10,9 Kg.	400x300x195mm

DISEGNO TECNICO / TECHNICAL DRAW

