






PA299 C

**Terminal block with
integrated cable clamp,
earth bracket and cover.
For snap-in fixing on chassis**



TECHNICAL DATA

	IEC Standards							American Standards						
	A	B	C	D	E	F	G	H	I	L	M	N	O	P
Dimensions mm (inches)	75 (2.95)	37 (1.46)	21 (0.83)	6 (0.24)	16 (0.63)	1 (0.04)	4 (0.16)	8 (0.31)	24 (0.94)	3.5 (0.14)	5 (0.20)	16 (0.63)	21 (0.83)	52 (2.05)
Versions	3 poles													
Ratings	450V - 16A							300V - 16A						
Wire size	1.5 sqmm							18 + 14 AWG						
Working Temperature	- 5 ÷ 125°C (short time 155°C)							23 ÷ 221°F						
Plastic Material	Polyamide PA6.6 black colour, UL94 V2, GWT 960°C													
Metal Parts	M4 zinc plated steel screw; 6.3 x 0.8 zinc plated steel tab insert; other parts made in zinc plated steel													
Cable Section	3 x 0.75 sqmm ÷ 3 x 1.5 sqmm													
Cable Clamp Screw	3.5 x 15 mm (0.14" x 0.60") HI-LO													

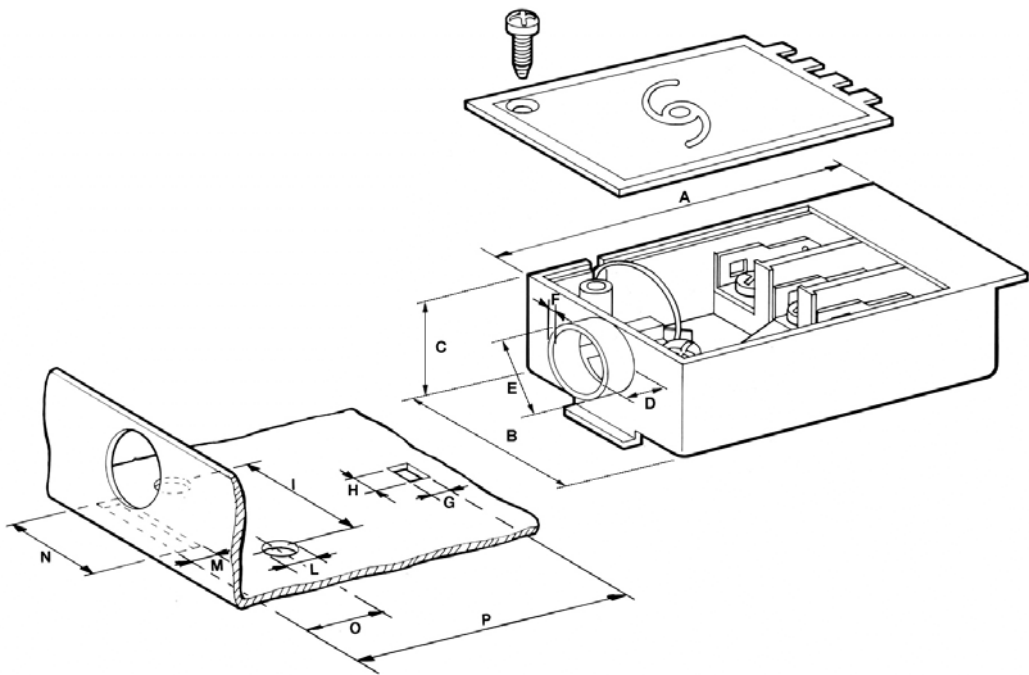
Approvals	File Nr.	Ratings (sqmm/AWG – V – A – T)	Standard References
	CA02.00716	1.5 sqmm - 450V – 125°C	EN 60998-1; EN 60998-2-1; EN 61210; EN60335-1
	121397	1.5 sqmm - 450V - 16A – 125°C	DIN EN 60335-1, /A12, /A13, /A14; DIN EN 60998-1; DIN EN 60998-2-1; DIN EN 61210 (VDE 0613)
	E208213 Vol.1 Sec.1	14+18 AWG – 300 V – 16A (UR) 12A (cUR) 130 °C	UL 1977, CNS C22-2 182.3 1987





PA299 C

DIMENSIONAL
DRAWING



PACKAGING				
Type	P-N	Pack.	Dim. Pack. (LxHxP)	Weight (Kg)
PA 299 C	500352	500	40x39x40	17.0
PA 299 COVER	972502	500	30x20x40	3.0

