



SXLR



TYPICAL APPLICATIONS Steam cleaners

FUNCTIONS

- SPST, illuminated
- DPST, illuminated or not

CYCLE No. 50.000

CUT OUT ø 25 mm

AMBIENT TEMPERATURE 125 °C

GWT 850 °C

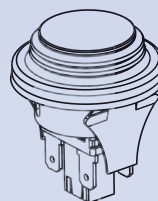
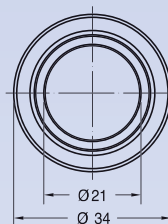
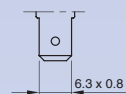
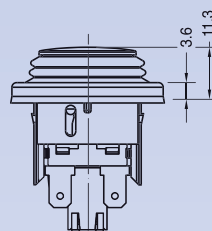
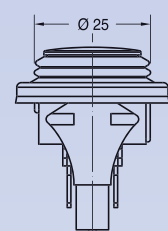
GWT NO FLAME (<2sec) 750 °C on demand

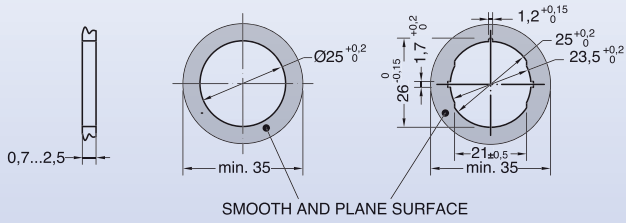
S X L R

?

DRAWING

TERMINAL





S	X	L	R	TERMINAL	FUNCTION	RATING	RUBBER COLOUR	BUTTON COLOUR	MARKING COLOUR	MARKING	0	0	0

?	?	?	?	?	?	?	0	0	0
---	---	---	---	---	---	---	---	---	---

FUNCTION

RATING

RUBBER COLOUR

BUTTON COLOUR

MARKING COLOUR

MARKING

2

6

8

C

16 (4) A / 250 VAC
 10 (2) A / 250 VAC - 5E4
 T125 °C
 EN 61058

12 A / 125 VAC
 12 A / 250 VAC
 1/4 HP - 125 VAC
 1/2 HP - 250 VAC
 T100 °C
 UL 1054
 IP65

1 black

2 white

X custom

R red

M white

N black

ILLUMINATED ✨

G red

H orange

E green

L white

F blue

X custom

0 none

1 black

2 white

X custom

0

D

P

R

X