

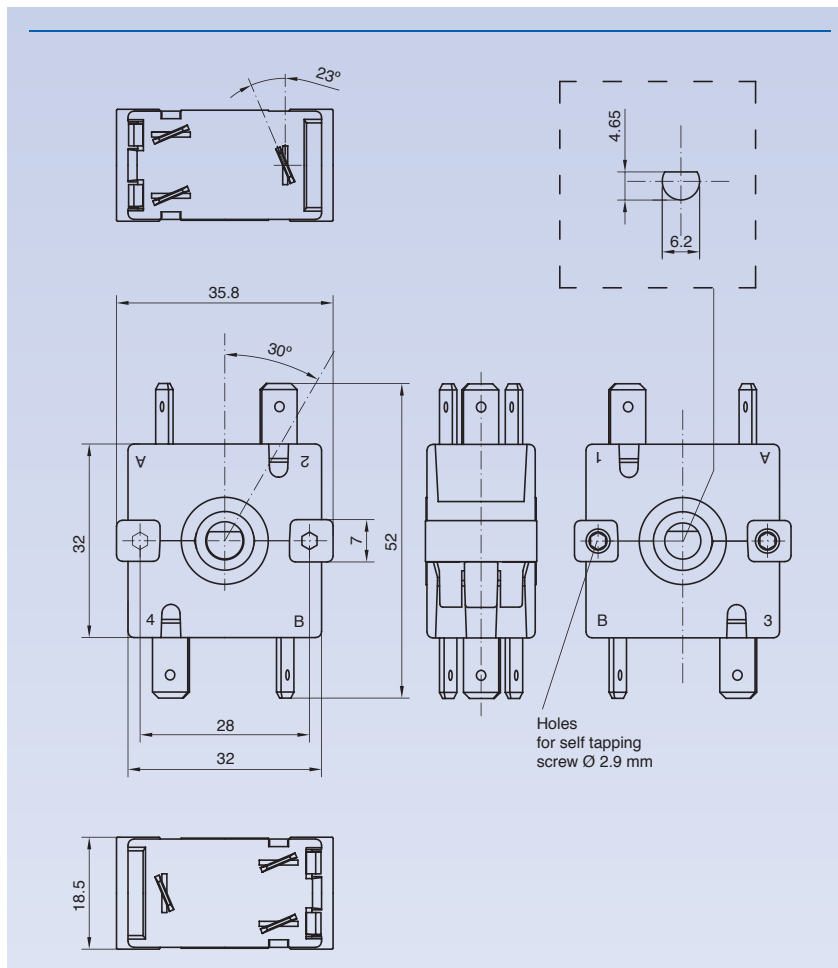
R1

TYPICAL APPLICATIONS	Fan heaters, small ovens, cleaners
FUNCTIONS	■ 30° steps (up to 6 positions), SP or DP
CYCLE No.	10.000 (50.000 on demand)
CUT OUT	28 mm interaxes screws
AMBIENT TEMPERATURE	150 °C
GWT	850 °C
GWT NO FLAME (<2sec)	750 °C on demand



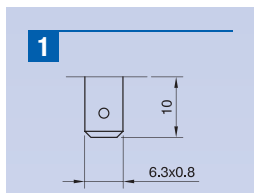
R 1

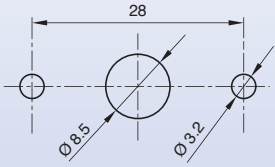
DRAWING



?

TERMINAL





TERMINAL	FUNCTION	RATING	SHAFT
R	1		0 0

? ?

FUNCTION

A1		E4	
D1		FA	
D2		FU	
D3		G4	
D5		G6	
D7		GE	
D8		H2	
D9			

?

RATING

1

13 (3) A / 250 VAC
 6 (6) A / 250 VAC
 T150 °C
 EN 61058

13 A / 125 VAC
 T65 °C
 UL 1054
 CSA C22.2

?

SHAFT

0	No shaft	
1		
Shaft also available separately R019000		
2		
Shaft also available separately R023000		
3		
Shaft also available separately R022000		
4		
Shaft also available separately R104000		