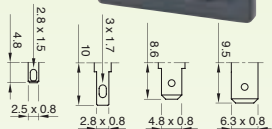
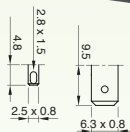


STS

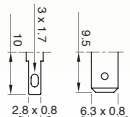
STS3
C14
Class I
T 70 °C



STS5
C16
Class I
T 120 °C



STS2
C18
Class II
T 70 °C



10 A / 250 VAC
EN 60320

10 A / 250 VAC
15 A / 125 VAC
UL 498

TYPICAL APPLICATIONS Coffee machine, appliance inlet for cold/warm conditions with/without earthing contact, for "snap in" fastening

WIRING DIAGRAMAS

- 2-pole
- 2-pole + earth

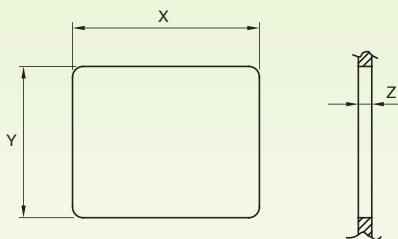
CUT OUT 27x20 mm

GWT 850 °C

GWT NO FLAME (<2sec) 750 °C on demand

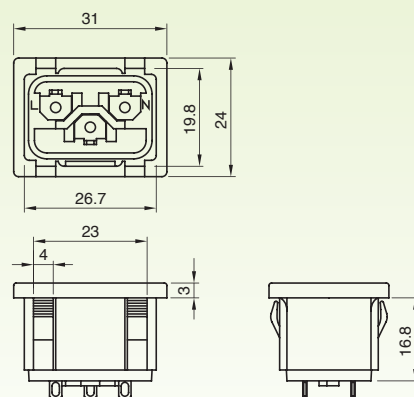


CUT OUT



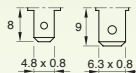
Z	X	Y
1 ... 1,8	27	20,0 +0,2
1,8 ... 3,0	27	20,2 +0,2

DRAWING



SFS

SFS2
H
Class II
T 70 °C



SFS3
F
Class I
T 70 °C



10 A / 250 VAC
EN 60320

10 A / 250 VAC
15 A / 125 VAC
UL 498

TYPICAL APPLICATIONS Small appliances, appliance outlet for cold conditions with/without earthing contact, for "snap in" fastening

WIRING DIAGRAMAS

- 2-pole
- 2-pole + earth

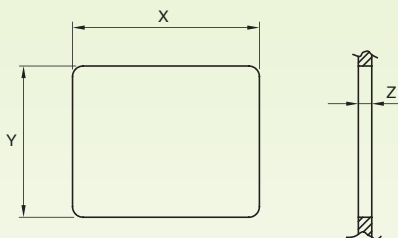
CUT OUT 32x25 mm

GWT 850 °C

GWT NO FLAME (<2sec) 750 °C on demand



CUT OUT



Z	X	Y
1 ... 1,8	32,5	25,0 +0,2
1,9 ... 3,0	32,5	25,2 +0,2

DRAWING

